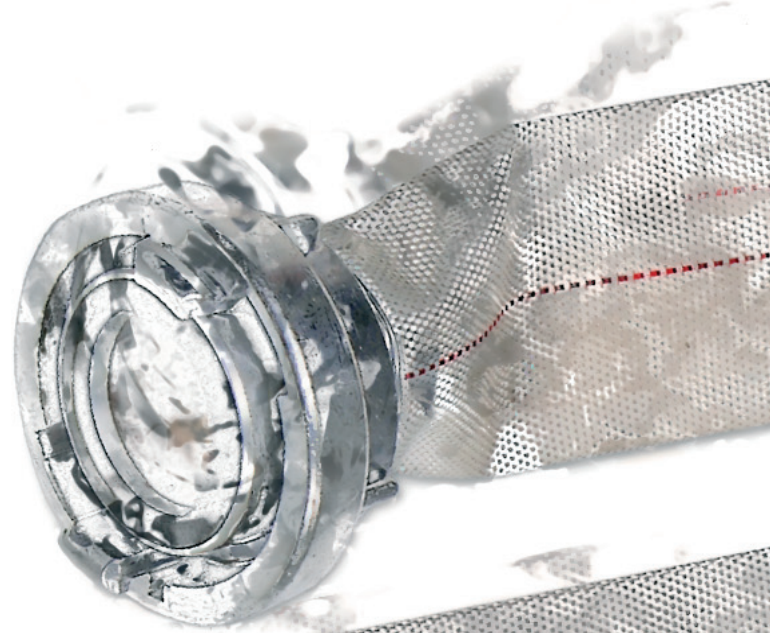
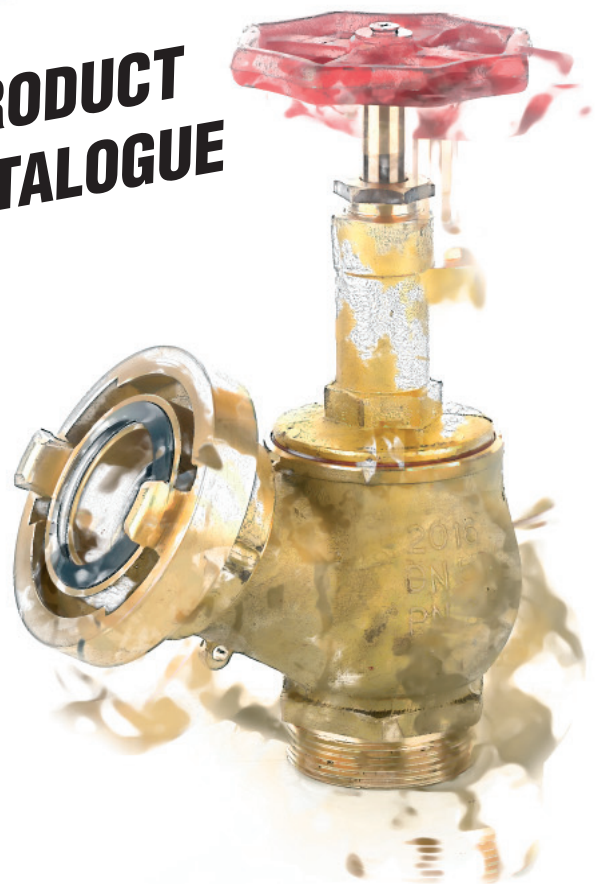






**FIRE FIGHTING
EQUIPMENT**



**PRODUCT
CATALOGUE**



	Fire Hoses	3
	Fire Fittings	7
	Valves	13
	Special Fittings	15
	Gasket	17
	Hydrant's spanner	18
	Nozzles	19
	Suspended Hydrants	21
	Internal Hydrants	49
	Pelet Accessories	75



Fire Fighting Equipment Company LESZEK KORUS

44-280 Rydułtowy, ul. Raciborska 279
tel./fax: +48 32 457 88 65
e-mail: biuro@korus.pl

www.korus.pl

HYDRANT FIRE HOSE FOR CABINETS EN 14540 H-25

Features:

- Multi-purpose lay flat hose especially for fire cabinets and marine hose. Circular woven jacket out of 100% high tenacity synthetic yarn with an inner liner made out of PVC material.
- **Construction:** Single jacket, 100% high tensile strength virgin polyester filament yarns, both wrap and filler; PVC liner ensures the minimum friction for a maximum flow.
- **Certificate:** EN 14540

TECHNICAL PARAMETERS

Type	H-25-15-B	H-25-15-LA	H-25-20-B	H-25-20-LA
Inner diameter (mm)	25			
Length (m)	15	15	20	20
Weight of the hose without fittings (kg)	1.31	-	1.75	-
Weight of the hose with aluminium fittings (kg)	-	1.50	-	1.90
Operating temperature range	-30 do +70°C			
Working pressure (maximum) (BAR)	15			
Bursting pressure (minimum) (BAR)	45			



HYDRANT FIRE HOSE FOR CABINETS EN 14540 H-52

Features:

- Multi-purpose lay flat hose especially for fire cabinets and marine hose. Circular woven jacket out of 100% high tenacity synthetic yarn with an inner liner made out of PVC material.
- **Construction:** Single jacket, 100% high tensile strength virgin polyester filament yarns, both wrap and filler; PVC liner ensures the minimum friction for a maximum flow.
- **Certificate:** EN 14540

TECHNICAL PARAMETERS

Type	H-52-15-B	H-52-15-LA	H-52-20-B	H-52-20-LA
Inner diameter (mm)	52			
Length (m)	15	15	20	20
Weight of the hose without fittings (kg)	3.45	-	3.95	-
Weight of the hose with aluminium fittings (kg)	-	4.60	-	5.10
Operating temperature range	-30 do +70°C			
Working pressure (maximum) (BAR)	15			
Bursting pressure (minimum) (BAR)	45			



WATERPUMPS' FIRE HOSE W-52



Features:

- Multi-purpose lay flat hose especially for waterpumps and autopumps. Circular woven jacket out of 100% high tenacity synthetic yarn with an inner liner made out of PVC material.
- **Construction:** Single jacket, 100% high tensile strength virgin polyester filament yarns, both wrap and filler; PVC liner ensures the minimum friction for a maximum flow.
- **Certificate:** CNBOP certificate for hoses for waterpumps and autopumps.

TECHNICAL PARAMETERS

Type	W-52-20-B	W-52-20-ŁA
Inner diameter (mm)	52	
Length (m)	20	
Weight of the hose without fittings (kg)	3.78	-
Weight of the hose with aluminium fittings (kg)	-	4.20
Operating temperature range	-30 do +70°C	
Working pressure (maximum) (BAR)	-30 do +70°C	
Bursting pressure (minimum) (BAR)	45 (maximum > 51 according to CNBOP)	

WATERPUMPS' FIRE HOSE W-75



Features:

- Multi-purpose lay flat hose especially for waterpumps and autopumps. Circular woven jacket out of 100% high tenacity synthetic yarn with an inner liner made out of PVC material.
- **Construction:** Single jacket, 100% high tensile strength virgin polyester filament yarns, both wrap and filler; PVC liner ensures the minimum friction for a maximum flow.
- **Certificate:** CNBOP certificate for hoses for waterpumps and autopumps.

TECHNICAL PARAMETERS

Type	W-75-20-B	W-75-20-ŁA
Inner diameter (mm)	75	
Length (m)	20	
Weight of the hose without fittings (kg)	7.80	-
Weight of the hose with aluminium fittings (kg)	-	8.80
Operating temperature range	-30 do +70°C	
Working pressure (maximum) (BAR)	15	
Bursting pressure (minimum) (BAR)	45	

WATERPUMPS' FIRE HOSE W-110



Features:

- Multi-purpose lay flat hose especially for waterpumps and autopumps.
- Circular woven jacket out of 100% high tenacity synthetic yarn with an inner liner made out of PVC material.
- **Construction:** Single jacket, 100% high tensile strength virgin polyester filament yarns, both wrap and filler; PVC liner ensures the minimum friction for a maximum flow.
- **Certificate:** CNBOP certificate for hoses for waterpumps and autopumps.

TECHNICAL PARAMETERS

Type	W-110-20-B	W-110-20-ŁA
Inner diameter (mm)	110	
Length (m)	20	
Weight of the hose without fittings (kg)	16.30	-
Weight of the hose with aluminium fittings (kg)	-	19.10
Operating temperature range	-30 do +70°C	
Working pressure (maximum) (BAR)	12	
Bursting pressure (minimum) (BAR)	36	

FIRE HOSE WITH OUTER COATING W-52-RED

TECHNICAL PARAMETERS

Type	W-52-20-B	W-52-20-ŁA
Inner diameter (mm)	52	
Length (m)	20	
Weight of the hose without fittings (kg)	4.16	-
Weight of the hose with aluminium fittings (kg)	-	4.75
Operating temperature range	-30 do +70°C	
Working pressure (maximum) (BAR)	15	
Bursting pressure (minimum) (BAR)	45	



FIRE HOSE WITH OUTER COATING W-75-RED

TECHNICAL PARAMETERS

Type	W-75-20-B	W-75-20-ŁA
Inner diameter (mm)	75	
Length (m)	20	
Weight of the hose without fittings (kg)	8.40	-
Weight of the hose with aluminium fittings (kg)	-	9.26
Operating temperature range	-30 do +70°C	
Working pressure (maximum) (BAR)	15	
Bursting pressure (minimum) (BAR)	45	



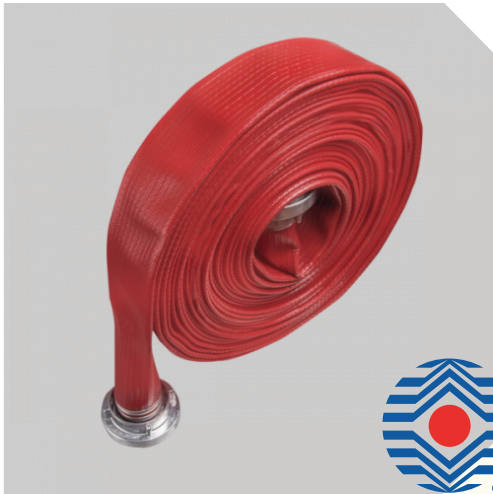
FIRE HOSE WITH OUTER COATING W-110-RED

TECHNICAL PARAMETERS

Type	W-110-20-B	W-110-20-ŁA
Inner diameter (mm)	110	
Length (m)	20	
Weight of the hose without fittings (kg)	16.80	-
Weight of the hose with aluminium fittings (kg)	-	19.60
Operating temperature range	-30 do +70°C	
Working pressure (maximum) (BAR)	12	
Bursting pressure (minimum) (BAR)	36	



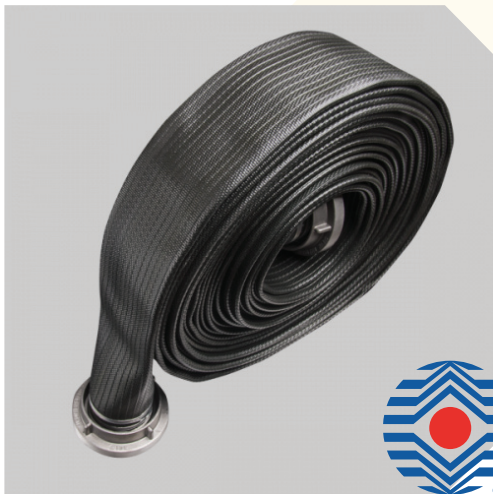
RUBBER COVERED HOSE – 52



Rubber Hose (Rubber covered hose) is usually used for delivery the oil products, it has very good oil and chemical resistance, anti-corrosion and UV-resistance performance.

TECHNICAL PARAMETERS			
Type	W-52-20-B	W-52-20-ŁA	
Inner diameter (mm)	52		
Length (m)	20		
Weight of the hose without fittings (kg)	8.20	-	
Weight of the hose with aluminium fittings (kg)	-	8.80	
Operating temperature range	-30 do +70°C		
Working pressure (maximum) (BAR)	15		
Bursting pressure (minimum) (BAR)	45		

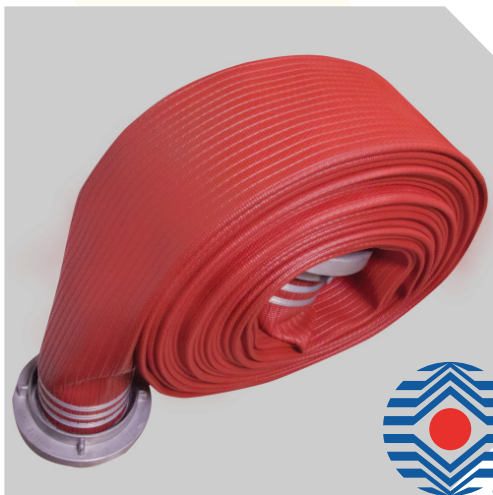
RUBBER COVERED HOSE – 75



Rubber Hose (Rubber covered hose) is usually used for delivery the oil products, it has very good oil and chemical resistance, anti-corrosion and UV-resistance performance.

TECHNICAL PARAMETERS			
Type	W-75-20-B	W-75-20-ŁA	
Inner diameter (mm)	75		
Length (m)	20		
Weight of the hose without fittings (kg)	11.20	-	
Weight of the hose with aluminium fittings (kg)	-	12.20	
Operating temperature range	-30 do +70°C		
Working pressure (maximum) (BAR)	15		
Bursting pressure (minimum) (BAR)	45		

RUBBER COVERED HOSE – 100



Rubber Hose (Rubber covered hose) is usually used for delivery the oil products, it has very good oil and chemical resistance, anti-corrosion and UV-resistance performance.

TECHNICAL PARAMETERS			
Type	W-100-20-B	W-100-20-ŁA	
Inner diameter (mm)	100		
Length (m)	20		
Weight of the hose without fittings (kg)	11.20	-	
Weight of the hose with aluminium fittings (kg)	-	12.20	
Operating temperature range	-30 do +70°C		
Working pressure (maximum) (BAR)	15		
Bursting pressure (minimum) (BAR)	45		

HOSE CONNECTORS SYSTEM - STORZ

Connectors are designed for quick assembly of hoses and pumps' adapters, hydrants, valves, nozzles and other fire-fighting equipment.

TECHNICAL PARAMETERS

Size	Catch span	Hose diameter	Length of sleeve	Weight
25	31 mm	25 mm	55 mm	-
42	66 mm	42 mm	55 mm	-
45	66 mm	45 mm	55 mm	-
52	66 mm	38 mm	55 mm	-
52	66 mm	52 mm	55 mm	0.6 kg
65	66 mm	52 mm	66 mm	-
75	89 mm	75 mm	60 mm	1.01 kg
100	133 mm	100 mm	-	-
110	133 mm	110 mm	103 mm	2.57 kg



TECHNICAL PARAMETERS

Size	Catch span	Hose diameter	Length of sleeve	Weight
25	31 mm	25 mm	56 mm	0.18 kg
52	66 mm	52 mm	90 mm	0.7 kg
75	89 mm	52 mm	66 mm	-
75	89 mm	75 mm	124 mm	-
100	133 mm	101 mm	130 mm	-
110	133 mm	110 mm	170 mm	-



CAPS

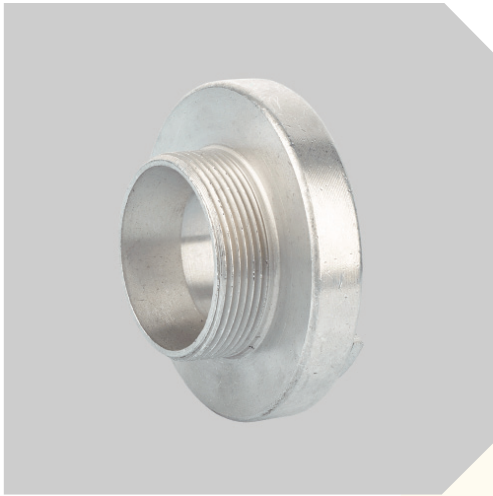
Caps are designed for plugging firefighting equipment ending with STORZ adapters.

TECHNICAL PARAMETERS

Size	Catch span	Height	Weight
25-DS	31 mm	28 mm	0.09 kg
52-DS	66 mm	28 mm	0.35 kg
75-DS	89 mm	40 mm	0.53 kg
110-DS	133 mm	46 mm	1.31 kg



MALE THREAD ADAPTERS



Adapters with external thread are used to connect the equipment ended with internal thread with hoses.

TECHNICAL PARAMETERS

Size	Catch span	External thread	Diameter	Weight
25	31 mm	G 1	55 mm	-
25	31 mm	3/4"	55 mm	-
25/D-DS	31 mm	G 1	18 mm	0.07 kg
52	66 mm	M60x2	32 mm	0.25 kg
52	66 mm	G 1	98 mm	-
52	66 mm	G1 1/4	98 mm	-
52	66 mm	G1 1/2	98 mm	-
52	66 mm	G 2	98 mm	-
52/C	66 mm	G1 1/2	32 mm	0.24 kg
52/C	66 mm	G 2	32 mm	0.22 kg
75	89 mm	M80x2	64.5 mm	0.44 kg
75	89 mm	G2 1/2	126 mm	-
75	89 mm	G 2	126 mm	-
75	89 mm	M80x2	-	-
75/B	89 mm	G2 1/2	64.5 mm	0.4 kg
75/B	89 mm	G 3	64.5 mm	0.38 kg
110	133 mm	G 4	182 mm	-
110/A-DS	133 mm	G 4	100 mm	0.96 kg
110-DS	133 mm	M120x2	100 mm	0.96 kg

FEMALE THREAD ADAPTERS



Adapters with internal thread are used to connect the equipment ended with external thread with hoses.

TECHNICAL PARAMETERS

Size	Catch span	External thread	Diameter	Weight
25	31 mm	3/4"	-	-
25	31 mm	G 1	18 mm	0.07 kg
52	66 mm	G 1	-	-
52	66 mm	G1 1/4	-	-
52	66 mm	G1 1/2	44.5 mm	0.24 kg
52	66 mm	G 2	44.5 mm	0.24 kg
75	89 mm	G 2	64.5 mm	-
75	89 mm	G2 1/2	64.5 mm	0.39 kg
75	89 mm	G 3	64.5 mm	0.47 kg
110	133 mm	G 4	100 mm	0.93 kg
110	133 mm	G4 1/2	100 mm	-

Brass adapter with internal thread are used to connect the equipment ended with external thread with hoses.

TECHNICAL PARAMETERS

Size: 52mm
External thread: 2"
Material: MO-59
Working pressure: 2,5 MPa
Weight: 0,74 kg

BRASS ADAPTER

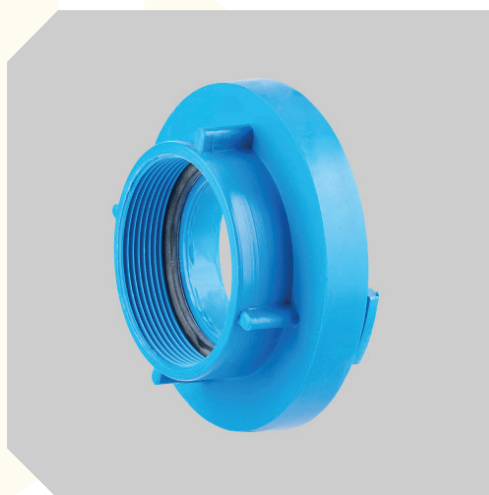


ABS adapters with internal thread are used to connect the equipment ended with external thread with hoses.

TECHNICAL PARAMETERS

Size	Catch span	External thread	Round thread
52 mm	66 mm	GW 2"	44,5 mm
75 mm	89 mm	GZ 2,5"	64,5 mm
110 mm	133 mm	GZ 4"	100 mm

ABS ADAPTER

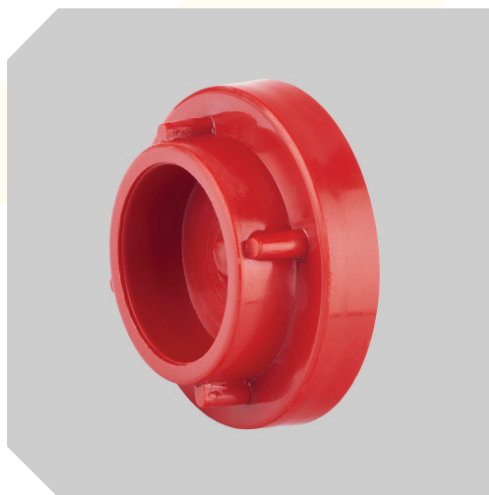


Caps are designed for plugging firefighting equipment ending with STORZ adapters.

TECHNICAL PARAMETERS

Size	Catch span	Height	Weight
52 mm	66 mm	36 mm	0.14 kg
75 mm	89 mm	40 mm	0.24 kg
110 mm	133 mm	46 mm	0.60 kg

ABS CAP



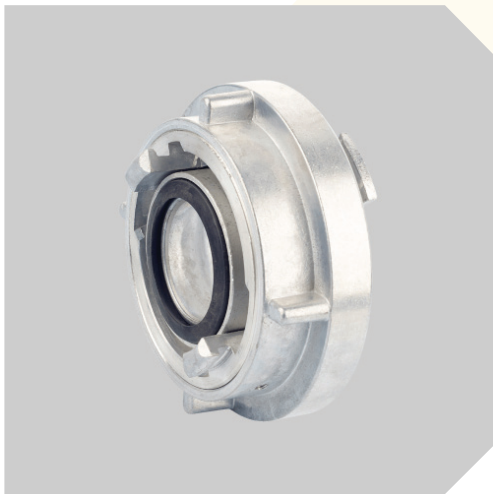
FIRE HYDRANT CAP



Hydrant cap with a triangle is used to close hydrant caps with a metal sealing surface.

TECHNICAL PARAMETERS			
Size	Round thread	Height	Weight
52/C	Rd 50 x 1/6	36 mm	0.14 kg
75/B	89 mm	40 mm	0.24 kg
110/A	133 mm	46 mm	0.60 kg

SWITCHES



Switches are used to connect hoses with various internal diameter or to connect hoses to fittings with a different size than the hoses' adapters.

TECHNICAL PARAMETERS			
Size	Catch span	Height	Weight
52-25	66/31 mm	33.5 mm	0.37 kg
75-52	89/66 mm	39 mm	0.63 kg
110-75	133/89 mm	45 mm	1.66 kg

CASE



Case are designed to connect and repair fire pipes. Available in size: 25 mm, 52 mm, 75 mm, 110 mm.

TECHNICAL PARAMETERS			
Size	Hose diameter	Length	Weight
25		According to requirements of clients	
52		According to requirements of clients	
75		According to requirements of clients	
110		According to requirements of clients	

Couplings for hoses (DS)

TECHNICAL PARAMETERS

Size	Catch span	Hose diameter	Weight
50	78 mm	52 mm	0.28 kg
70	95 mm	65 mm	0.48 kg
80	107 mm	75 mm	0.65 kg
100-DS	140 mm	100 mm	1.00 kg
125-DS	166 mm	125 mm	1.76 kg
150	176 mm	150 mm	2.45 kg

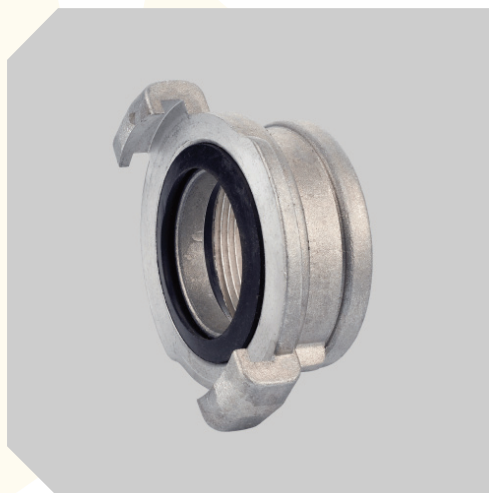
RUSSIAN COUPLINGS (GOST)



ADAPTERS WITH FEMALE AND MALE THREAD

TECHNICAL PARAMETERS

Size	Catch span	Female thread	Weight
50	78 mm	G 2	0.20 kg
70	95 mm	G2 1/2	0.33 kg
80	107 mm	G 3	0.42 kg
100-DS	140 mm	G 4	0.70 kg
125-DS	166 mm	G 5	1.10 kg
150	176 mm	G 6	1.25 kg



ADAPTER'S CAPS

TECHNICAL PARAMETERS

Size	Catch span	Weight
50	78 mm	0.26 kg
70	95 mm	0.56 kg
80	107 mm	0.60 kg
100	140 mm	0.80 kg
125	166 mm	1.20 kg
150	176 mm	1.90 kg



REDUCING COUPLING Ø52/25



Reducing coupling Ø52/25 is used to connect the 25 semi-rigid hoses with hydrant valves DN-50 in hydrant cabinets and other devices ending with 52 STORZ couplings.

TECHNICAL PARAMETERS

According to PN-91/M-51021

Tap's strength – 3,5 MPa

Weight – 0,38 kg

Materials: aluminium cast of AK 11 (AlSi 11), gaskets - rubber

„MOLE” 52 – SEWER CLEANING ADAPTER / BASE



It is used for cleaning sewers from mud and sludge from the drains and ditches. High-pressure stream penetrates the coats lying in the sewer. After changing the ending it creates a washing umbrella.

TECHNICAL PARAMETERS

Dimension: 52 mm

Weight: 0,8 kg

Materials – aluminium cast of AK11, alloy coast, gaskets - rubber

„MOLE” 25 – SEWER CLEANING ADAPTER / BASE



It is used for cleaning sewers from mud and sludge from the drains and ditches. High-pressure stream penetrates the coats lying in the sewer. After changing the ending it creates a washing umbrella.

TECHNICAL PARAMETERS

Dimension: 25 mm

Weight: 0,3 kg

Materials – aluminium cast of AK11, alloy coast, gaskets - rubber

Hydrant valve ZH-25 is used as one of the elements included in the internal hydrant 25.

TECHNICAL PARAMETERS

Nominal diameter: 25 mm

Weight: 0,4 kg

Working pressure: 1,2 MPa

Materials: aluminum alloy cast AK 11 (AlSi 11), brass M058, gaskets: hard rubber

ALUMINIUM HYDRANT VALVE 25



Hydrant valve ZH-52 is used as one of the elements included in the internal hydrant 52.

TECHNICAL PARAMETERS

Working pressure: 1,6 MPa

Adapter's rated diameter: 52 mm

Connection diameter: 2"

Diameter of a circle: 100 mm

ALUMINIUM HYDRANT VALVE 52



Brass hydrant valve is used to opening and closing flow of water from the fire hydrant or pump. It can be used in underground mines.

TECHNICAL PARAMETERS

Maximum working pressure: 2,5 MPa

Adapter's rated diameter" 52 mm

Connection diameter: 2"

Diameter of a circle: 100 mm

MINING BRASS VALVE



BRASS HYDRANT VALVE Ø25



Brass Hydrant valve ZH-25 is used as one of the elements included in the internal hydrant 25.

TECHNICAL PARAMETERS

Rated diameter: 25 mm

Weight: 0,48 kg

Working pressure: 1,6 MPa

Connection diameter: 1"

BRASS HYDRANT VALVE Ø52



Brass Hydrant valve ZH-52 is used as one of the elements included in the internal hydrant 52.

TECHNICAL PARAMETERS

Rated diameter: 52 mm

Weight: 0,48 kg

Working pressure: 1,6 MPa

Connection diameter: 2"

HYDRANT VALVE TYPE PZ-31



Hydrant valve of PZ 31-2,5" type is used for water flow control in hydrant or pump systems. It is designed for fire protection piping of working pressure up to 2,5 MPa.

TECHNICAL PARAMETERS

Maximum working pressure: 2.5 MPa

Rated diameter: 75mm

Connection diameter: 2 1/2"

Collector allows delivery of water to the 110 hose from the two power sources of the 75 hose. The backflow valve allows for automatic shut-off of one the inlets in the case of a large differential power pressure.

TECHNICAL PARAMETERS

Inlet - 2x75
Outlet - 110
Tightness: 2 MPa
Materials: aluminum alloy cast AK 11 (AISi 11), brass M058, gaskets: hard rubber



COLLECTOR 2X75/110 PN

Dividers are used for distributing the extinguishing medium from one feed line over several hose lines. Each hose line can be shut-off individually.

TECHNICAL PARAMETERS

Inlet	Outlet	Weight
75/B	2 x 52/C	5.25 kg

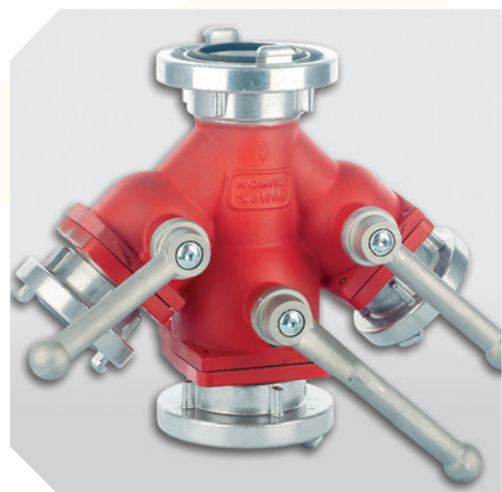


DIVIDERS RK-75/52-52

Dividers are used for distributing the extinguishing medium from one feed line over several hose lines. Each hose line can be shut-off individually.

TECHNICAL PARAMETERS

Inlet	Outlet	Weight
75/B	2 x 52/C + 75/B	5.25 kg



DIVIDERS RK-75/52-75-52

SUCTION STRAINER



Suction strainer is the beginning of the suction line and protects the pump from clogging with large debris. Equipped with a check valve to prevent the return of the water, and a lug to fix the float.

Suction strainer 75

TECHNICAL PARAMETERS		
Inlet	Dimension (L x W x H)	Weight
75/B	184 x 184 x 208 mm	2.30 kg

Suction strainer 110

TECHNICAL PARAMETERS		
Inlet	Dimension (L x W x H)	Weight
110/A	233 x 233 x 252 mm	4.80 kg

OBLIQUE OUTLET SUCTION STRAINER



Oblique outlet suction strainer is used to suck water from the flooded areas and protects the pump against contamination. It has a safety valve protecting from emptying the hose at the break of sucking.

TECHNICAL PARAMETERS			
Size	Outlet	Dimension (L x W x H)	Weight
100	110/A	235 x 300 x 240 mm	4.00 kg

WATER SHIELD



The curtain nozzles are used to create a curtain of water in order to reduce the force of fire thermal radiation. They have variable speed, width and height of the stream which is achieved by the rotation of the lever.

TECHNICAL PARAMETERS			
Size	Outlet	Dimension (L x W x H)	Weight
52/C	52/C	205 x 210 x 105 mm	2.05 kg
75/B	75/B	205 x 260 x 130 mm	2.40 kg

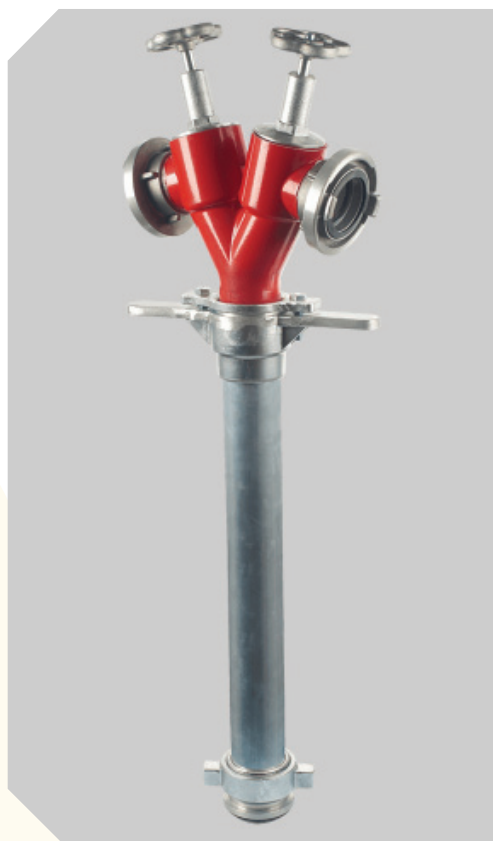
Flow and width of water curtain wave.

Size	Flow (l/min.)		Wave weight		Wave width	
	5 bar	8 bar	5 bar	8 bar	5 bar	8 bar
52/C	900	1200	9 m	10 m	22 m	25 m
75/B	1400	1800	9.5 m	10.5 m	26 m	29 m

STANDPIPES FOR UNDERGROUND HYDRANTS

Swivel head, 2 outlets and screw down valve

TECHNICAL PARAMETERS	
DN 80	
Weight: 7,65 kg	
Working pressure: 1 MPa	



Gasket

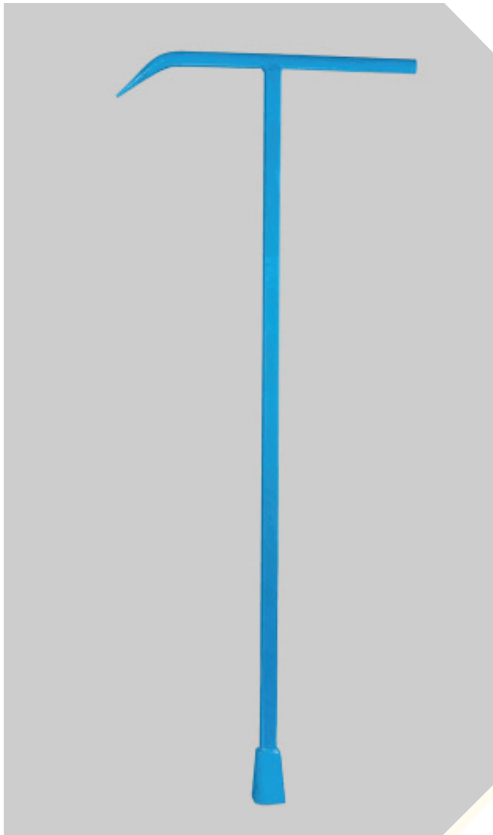
Designed for STORZ type fittings.

TECHNICAL PARAMETERS	
25	Suction - Delivery
52	Suction - Suction - Delivery
75	Suction - Suction - Delivery
110	Suction - Suction - Delivery

GASKETS



UNDERGROUND HYDRANT'S SPANNER



Underground hydrant's spanner are designed to open and close the above-ground hydrants.

TECHNICAL PARAMETERS

Length: 1100 mm
Length: 1100 mm
Height: 50 mm
Weight: 5.4 kg
Hole: square 35x35 mm

UNIVERSAL SPANNER K6 TYPE



Universal spanner K6 is designed to open and close the above-ground hydrants, as well as fittings and adaptors in the STORZ system.

TECHNICAL PARAMETERS

Length: 360 mm
Width: 160 mm
Length (m)

HYDRANT NOZZLE 25 WITH STORZ COUPLING

The valve is used to open and close the flow of water from the fire hydrant or pump system.

TECHNICAL PARAMETERS

Working pressure: 1,2 MPa

Capacity at the pressure of 0,2 MPa: 100 -150 l/min

Capacity at the pressure of 0,6 MPa: 170-220 l/min

The range of the stream at a pressure of 0.2 MPa: compact stream 10m, dispersed stream 3m



HYDRANT NOZZLE 52 WITH STORZ COUPLING

The valve is used to open and close the flow of water from the fire hydrant or pump system.

TECHNICAL PARAMETERS

Working pressure: 1,2 MPa

Capacity at the pressure of 0,2 MPa: 100 -150 l/min

Capacity at the pressure of 0,6 MPa: 170-220 l/min

The range of the stream at a pressure of 0.2 MPa: compact stream 10m, dispersed stream 3m



HYDRANT NOZZLE 52 WITH GOST COUPLING

The valve is used to open and close the flow of water from the fire hydrant or pump system for russian norm gost.

TECHNICAL PARAMETERS

Working pressure: 1,2 MPa

Capacity at the pressure of 0,2 MPa: 100 -150 l/min

Capacity at the pressure of 0,6 MPa: 170-220 l/min

The range of the stream at a pressure of 0.2 MPa: compact stream 10m, dispersed stream 3m



PW-25/R UNIVERSAL NOZZLE



TECHNICAL PARAMETERS

Storz adaptor – 25/D
Length: 418 mm
Height: 156 mm
Weight: 1.3 kg

PW-52/R UNIVERSAL NOZZLE



TECHNICAL PARAMETERS

Storz adaptor – 52/C
Length: 418 mm
Height: 156 mm
Weight: 1.5 kg

PW-75/R UNIVERSAL NOZZLE



TECHNICAL PARAMETERS

Storz adaptor – 75 2,5"
Length: 418 mm
Height: 156 mm
Weight: 2.8 kg

Hydrant HWZ - 52SK1 - 530 x 400 x 180 red



TYPE:	HWZ - 52 - Suspended Internal Hydrant
SYMBOL:	HWZ - 52SK1 Standard Basket
DIMENSIONS:	530x400x180
TYPE OF LOCK:	Patent lock
TYPE OF DOOR:	Full Door, The cabinet door can be opened 180°

PRODUCT DESCRIPTION:

Hydrant cabinet made of sheet metal painted in color red (RAL 3000), The cabinet door can be opened 180°. Universal Model (possibility of connection in left and right version, in the amount of 8 holes). Suspended Dn 52.

EQUIPMENT:

Suspended hydrant cabinet (Z). A basket with a flat-folding hose \varnothing 52 (20 m or 15 m) and a Pwh \varnothing 52 nozzle (connected to the hose). ZH \varnothing 52 hydrant valve.

CONSTRUCTION:

Hydrant cabinet material - Steel sheet or Stainless steel sheet.
Anti-corrosion protection - Phosphating and possibly a zinc primer. Paint Coating - powder paint.

ID:

Safety mark Internal hydrant PN-EN ISO 7010-2012.
Certificate number, User's manual, Manufacturer's data, Rating plate.

WORKING PRESSURE:

From 0,2 to 0,7Mpa.

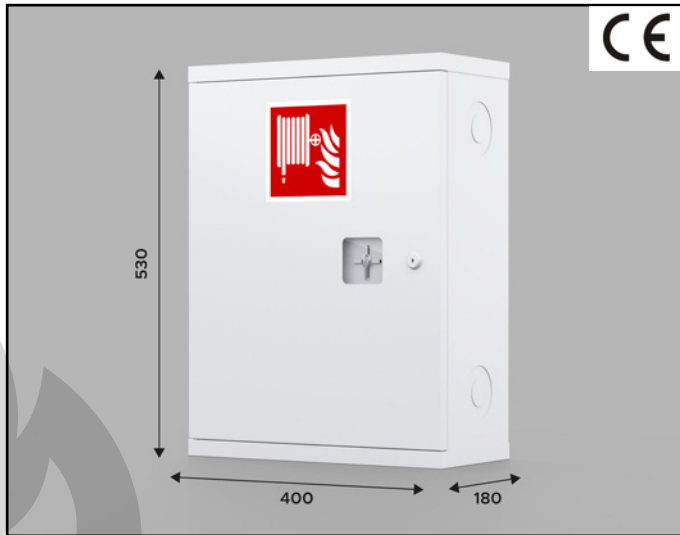
MINIMUM FLOW RATE FOR NOZZLE DIAMETER 13MM

120L/0,2 MPa.

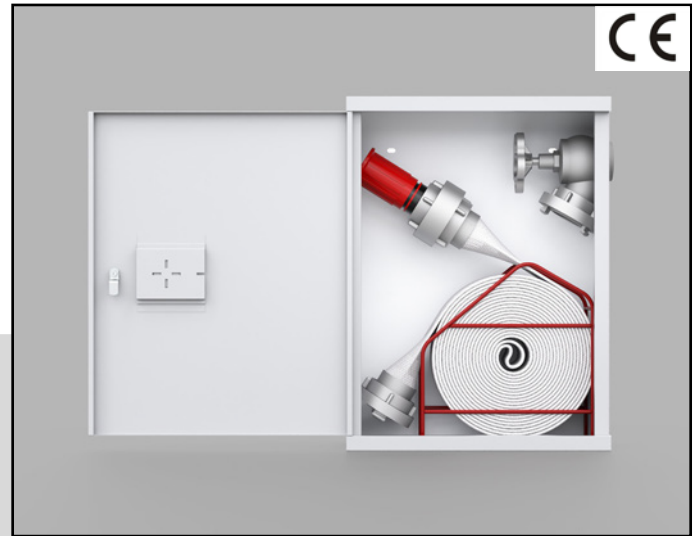
INSTALLATION METHOD:

Universal model, with the possibility of connecting to the left or right side.

COMPLIANCE WITH THE STANDARD: EN-671-2.



Hydrant HWZ - 52SK1 - 530 x 400 x 180 white



TYPE:	HWZ - 52 - Suspended Internal Hydrant
SYMBOL:	HWZ - 52SK1 Standard Basket
DIMENSIONS:	530x400x180
TYPE OF LOCK:	Patent lock
TYPE OF DOOR:	Full Door, The cabinet door can be opened 180°

PRODUCT DESCRIPTION:

Hydrant cabinet made of sheet metal painted in color white (RAL 9003), The cabinet door can be opened 180°. Universal Model (possibility of connection in left and right version, in the amount of 8 holes). Suspended Dn 52.

EQUIPMENT:

Suspended hydrant cabinet (Z). A basket with a flat-folding hose \varnothing 52 (20 m or 15 m) and a Pwh \varnothing 52 nozzle (connected to the hose). ZH \varnothing 52 hydrant valve.

CONSTRUCTION:

Hydrant cabinet material - Steel sheet or Stainless steel sheet.
Anti-corrosion protection - Phosphating and possibly a zinc primer. Paint Coating - powder paint.

ID:

Safety mark Internal hydrant PN-EN ISO 7010-2012.
Certificate number, User's manual, Manufacturer's data, Rating plate.

WORKING PRESSURE:

From 0,2 to 0,7Mpa.

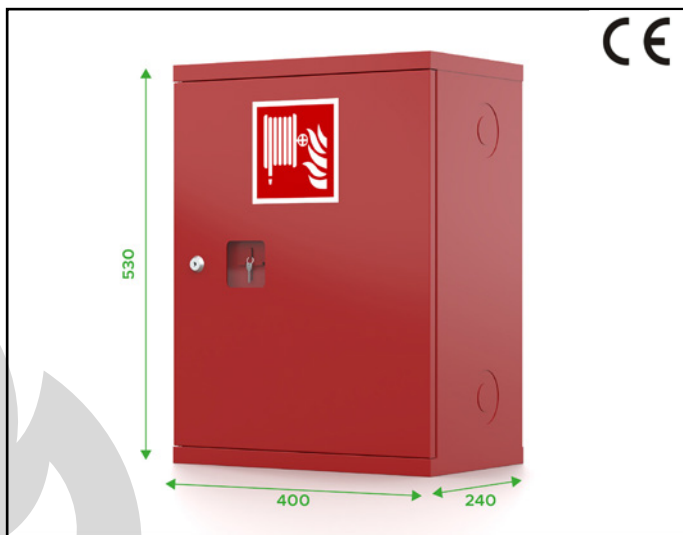
MINIMUM FLOW RATE FOR NOZZLE DIAMETER 13MM

120L/0,2 MPa.

INSTALLATION METHOD:

Universal model, with the possibility of connecting to the left or right side.

COMPLIANCE WITH THE STANDARD: EN-671-2.



Hydrant HWZ - 52SK2 - 530 x 400 x 240 red



TYPE:	HWZ-52 - Suspended Internal Hydrant
SYMBOL:	HWZ- 52SK2 - 2x Standard Baskets
DIMENSIONS:	530x400x240
TYPE OF LOCK:	Patent lock
TYPE OF DOOR:	Full door, The cabinet door can be opened 180°

PRODUCT DESCRIPTION:

Hydrant cabinet made of sheet metal painted in color red (RAL 3000), The cabinet door can be opened 180°. Universal Model (possibility of connection in left and right version, in the amount of 8 holes). Suspended Dn 52.

EQUIPMENT:

Suspended I hydrant cabinet (Z). Basket with 2x inserted flat-folding Hoses \varnothing 52 (20 m or 15 m) and a nozzle Pwh \varnothing 52 (connected to the hose). ZH \varnothing 52 hydrant valve.

CONSTRUCTION:

Hydrant cabinet material - steel sheet or stainless steel sheet.
Anti-corrosion protection - Phosphating and possibly a zinc primer. Paint Coating - powder paint.

ID:

Safety mark Internal hydrant PN-EN ISO 7010-2012.
Certificate number, User's manual, Manufacturer's data, Rating plate.

WORKING PRESSURE:

From 0,2 to 0,7Mpa.

MINIMUM FLOW RATE FOR NOZZLE DIAMETER 13MM

120L/0,2 MPa.

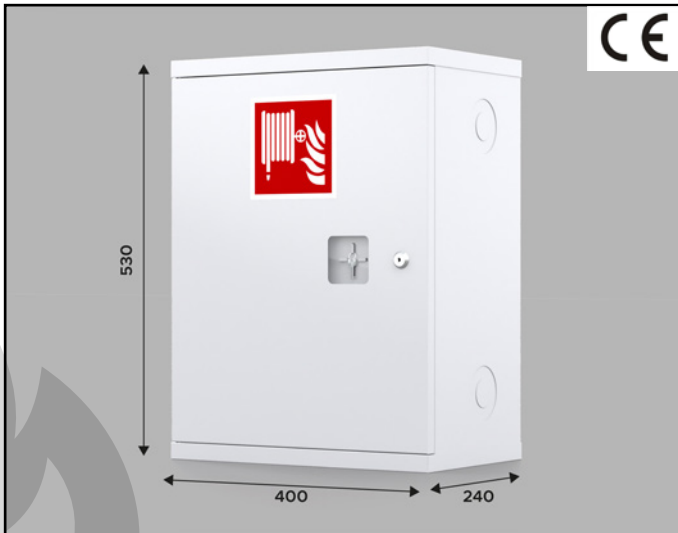
INSTALLATION METHOD:

Universal model, with the possibility of connecting to the left or right side.

COMPLIANCE WITH THE STANDARD: EN-671-2.



Hydrant HWZ - 52SK2 - 530 x 400 x 240 white



TYPE:	HWZ-52 - Suspended Internal Hydrant
SYMBOL:	HWZ- 52SK2 - 2x Standard Baskets
DIMENSIONS:	530x400x240
TYPE OF LOCK:	Patent lock
TYPE OF DOOR:	Full door, The cabinet door can be opened 180°

PRODUCT DESCRIPTION:

Hydrant cabinet made of sheet metal painted in color white (RAL 9003), The cabinet door can be opened 180°. Universal Model (possibility of connection in left and right version, in the amount of 8 holes). Suspended Dn 52.

EQUIPMENT:

Suspended I hydrant cabinet (Z). Basket with 2x inserted flat-folding Hoses \varnothing 52 (20 m or 15 m) and a nozzle Pwh \varnothing 52 (connected to the hose). ZH \varnothing 52 hydrant valve.

CONSTRUCTION:

Hydrant cabinet material - steel sheet or stainless steel sheet.
Anti-corrosion protection - Phosphating and possibly a zinc primer. Paint Coating - powder paint.

ID:

Safety mark Internal hydrant PN-EN ISO 7010-2012.
Certificate number, User's manual, Manufacturer's data, Rating plate.

WORKING PRESSURE:

From 0,2 to 0,7Mpa.

MINIMUM FLOW RATE FOR NOZZLE DIAMETER 13MM

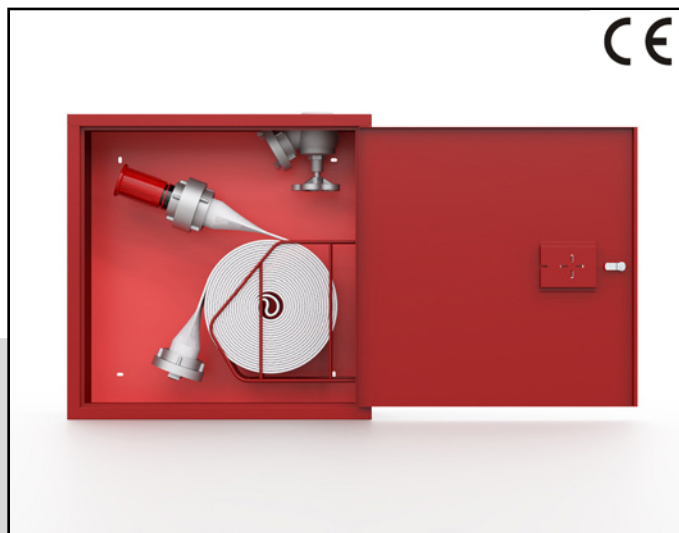
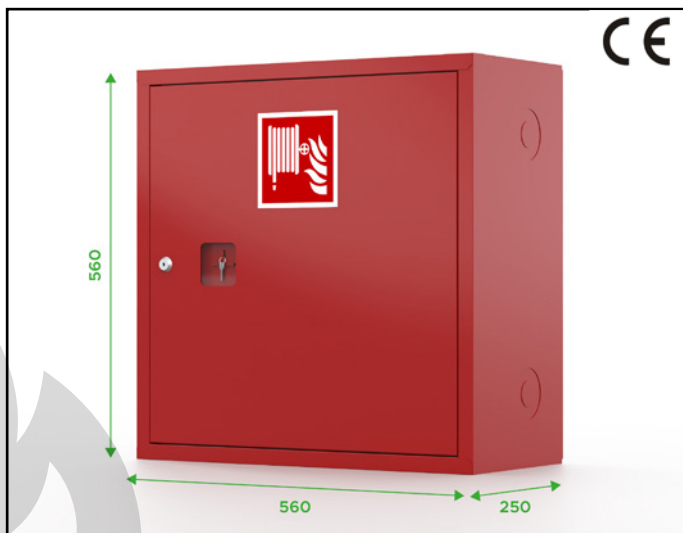
120L/0,2 MPa.

INSTALLATION METHOD:

Universal model, with the possibility of connecting to the left or right side.

COMPLIANCE WITH THE STANDARD: EN-671-2.

Hydrant HWZ - 52SK1 - 560 x 560 x 250 red



TYPE:	HWZ-52 - Suspended Internal Hydrant
SYMBOL:	HWZ- 52SK1 - Standard Basket
DIMENSIONS:	560x560x250
TYPE OF LOCK:	Patent lock
TYPE OF DOOR:	Full door, The cabinet door can be opened 180°

PRODUCT DESCRIPTION:

Hydrant cabinet made of sheet metal painted in color red (RAL 3000), The cabinet door can be opened 180°. Universal Model (possibility of connection in left and right version, in the amount of 8 holes). Suspended Dn 52.

EQUIPMENT:

Suspended hydrant cabinet (Z). A basket with a flat-folding hose \varnothing 52 (20 m or 15 m) and a Pwh \varnothing 52 nozzle (connected to the hose). ZH \varnothing 52 hydrant valve.

CONSTRUCTION:

Safety Mark Internal Hydrant PN-EN ISO 7010-2012.
Certificate number, User's manual, Manufacturer's data, Rating plate.

ID:

Safety mark Internal hydrant PN-EN ISO 7010-2012.
Certificate number, User's manual, Manufacturer's data, Rating plate.

WORKING PRESSURE:

From 0,2 to 0,7Mpa.

MINIMUM FLOW RATE FOR NOZZLE DIAMETER 13MM

120L/0,2 MPa.

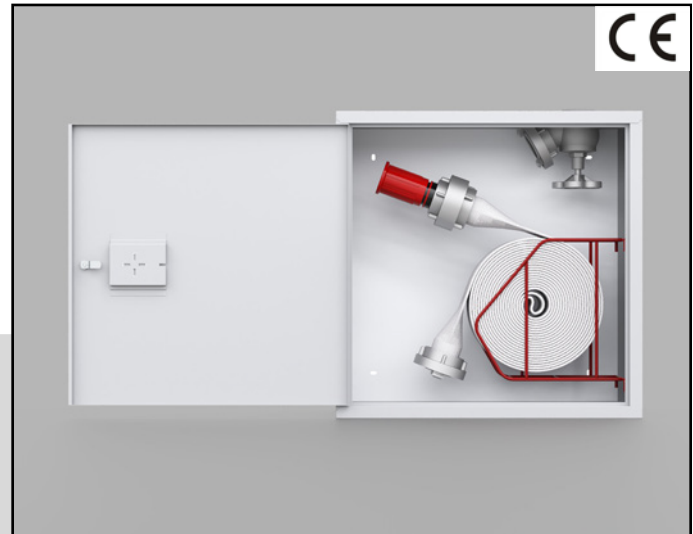
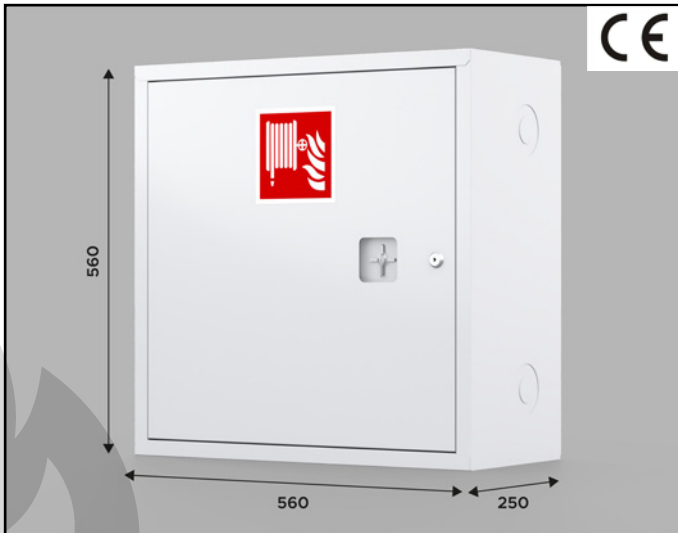
INSTALLATION METHOD:

Universal model, with the possibility of connecting to the left or right side.

COMPLIANCE WITH THE STANDARD: EN-671-2.



Hydrant HWZ - 52SK1 - 560 x 560 x 250 white



TYPE:	HWZ-52 - Suspended Internal Hydrant
SYMBOL:	HWZ- 52SK1 - Standard Basket
DIMENSIONS:	560x560x250
TYPE OF LOCK:	Patent lock
TYPE OF DOOR:	Full door, The cabinet door can be opened 180°

PRODUCT DESCRIPTION:

Hydrant cabinet made of sheet metal painted in color white (RAL 9003), The cabinet door can be opened 180°. Universal Model (possibility of connection in left and right version, in the amount of 8 holes). Suspended Dn 52.

EQUIPMENT:

Suspended hydrant cabinet (Z). A basket with a flat-folding hose \varnothing 52 (20 m or 15 m) and a Pwh \varnothing 52 nozzle (connected to the hose). ZH \varnothing 52 hydrant valve.

CONSTRUCTION:

Safety Mark Internal Hydrant PN-EN ISO 7010-2012.
Certificate number, User's manual, Manufacturer's data, Rating plate.

ID:

Safety mark Internal hydrant PN-EN ISO 7010-2012.
Certificate number, User's manual, Manufacturer's data, Rating plate.

WORKING PRESSURE:

From 0,2 to 0,7Mpa.

MINIMUM FLOW RATE FOR NOZZLE DIAMETER 13MM

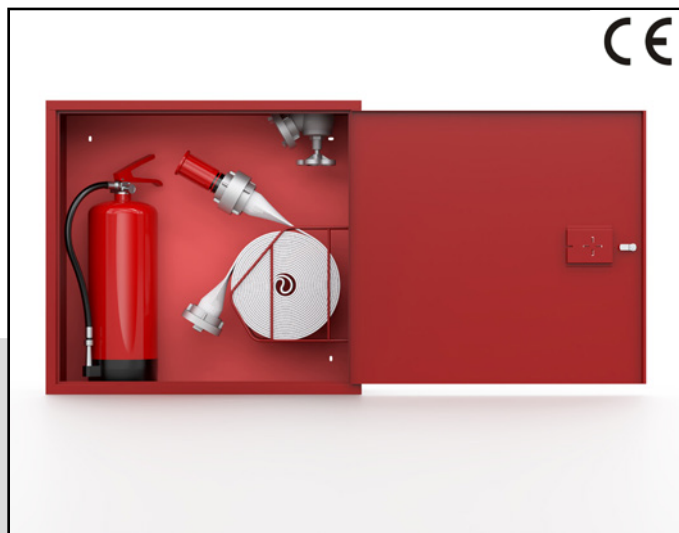
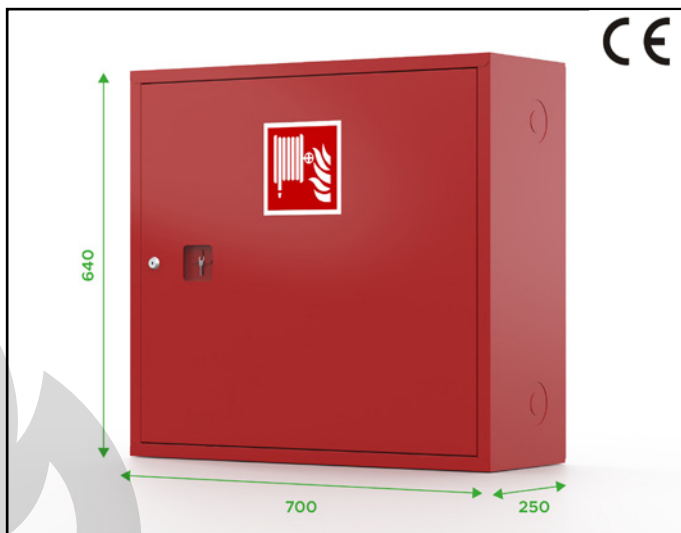
120L/0,2 MPa.

INSTALLATION METHOD:

Universal model, with the possibility of connecting to the left or right side.

COMPLIANCE WITH THE STANDARD: EN-671-2.

Hydrant HWZ - 52SK1 - G - 640 x 700 x 250 red



TYPE:	HWZ-52 - Suspended Internal Hydrant
SYMBOL:	HWZ- 52SK1-G – Standard basket + Fire extinguisher
DIMENSIONS:	640x700x250
TYPE OF LOCK:	Patent lock
TYPE OF DOOR:	Full door, The cabinet door can be opened 180°

PRODUCT DESCRIPTION:

Hydrant cabinet made of sheet metal painted in color red (RAL 3000), cabinet door can opening 180°. Universal Model (possibility of connection in left and right version.) Suspended Dn 52.

EQUIPMENT:

External hydrant cabinet (Z). A basket with a flat-folding hose \varnothing 52 (20 m or 15 m) and a Pwh \varnothing 52 nozzle (connected to the hose). GP 6 powder fire extinguisher. ZH \varnothing 52 hydrant valve.

CONSTRUCTION:

Hydrant cabinet material - steel sheet or stainless steel sheet.
Anti-corrosion protection - phosphating and possibly a zinc primer. Paint Coating - powder paint.

ID:

Safety mark Internal hydrant PN-EN ISO 7010-2012.
Certificate number, User's manual, Manufacturer's data, Rating plate.

WORKING PRESSURE:

From 0,2 to 0,7Mpa.

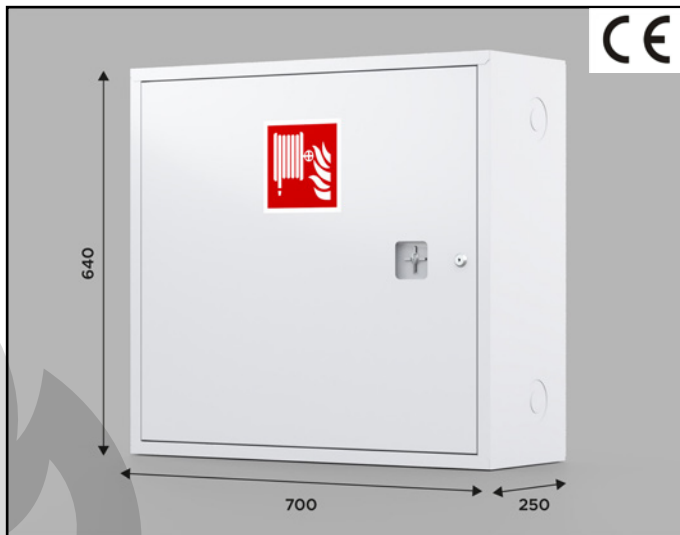
MINIMUM FLOW RATE FOR NOZZLE DIAMETER 13MM

120L/0,2 MPa.

INSTALLATION METHOD:

Universal model, with the possibility of connecting to the left or right side.

COMPLIANCE WITH THE STANDARD: EN-671-2.



Hydrant HWZ - 52SK1 - G - 640 x 700 x 250 white



TYPE:	HWZ-52 - Suspended Internal Hydrant
SYMBOL:	HWZ- 52SK1-G – Standard basket + Fire extinguisher
DIMENSIONS:	640x700x250
TYPE OF LOCK:	Patent lock
TYPE OF DOOR:	Full door, The cabinet door can be opened 180°

PRODUCT DESCRIPTION:

Hydrant cabinet made of sheet metal painted in color white (RAL 9003), cabinet door can opening 180°. Universal Model (possibility of connection in left and right version.) Suspended Dn 52.

EQUIPMENT:

External hydrant cabinet (Z). A basket with a flat-folding hose \varnothing 52 (20 m or 15 m) and a Pwh \varnothing 52 nozzle (connected to the hose). GP 6 powder fire extinguisher. ZH \varnothing 52 hydrant valve.

CONSTRUCTION:

Hydrant cabinet material - steel sheet or stainless steel sheet.
Anti-corrosion protection - phosphating and possibly a zinc primer. Paint Coating - powder paint.

ID:

Safety mark Internal hydrant PN-EN ISO 7010-2012.
Certificate number, User's manual, Manufacturer's data, Rating plate.

WORKING PRESSURE:

From 0,2 to 0,7Mpa.

MINIMUM FLOW RATE FOR NOZZLE DIAMETER 13MM

120L/0,2 MPa.

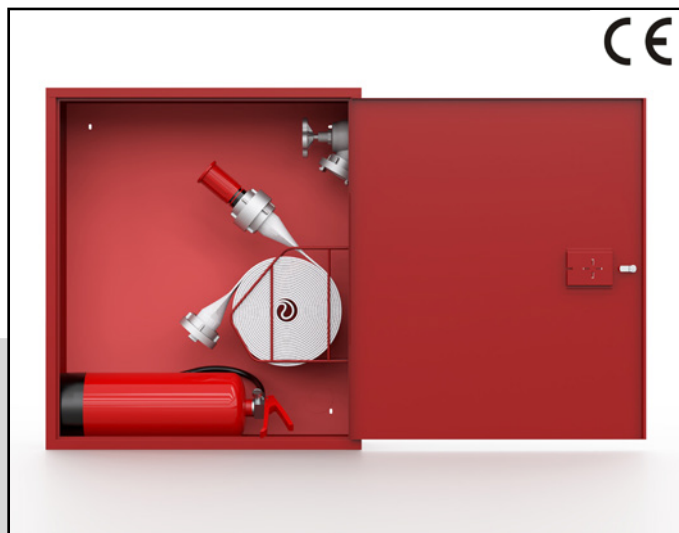
INSTALLATION METHOD:

Universal model, with the possibility of connecting to the left or right side.

COMPLIANCE WITH THE STANDARD: EN-671-2.



Hydrant HWZ - 52SK1 - G - 810 x 700 x 250 red



TYPE:	HWZ-52 - Suspended Internal Hydrant
SYMBOL:	HWZ- 52SK1-G – Standard Basket + Fire extinguisher
DIMENSIONS:	810x700x250
TYPE OF LOCK:	Patent lock
TYPE OF DOOR:	Full door, The cabinet door can be opened 180°

PRODUCT DESCRIPTION:

Hydrant cabinet made of sheet metal painted in color red (RAL 3000), The cabinet door can be opened 180°. Universal Model (possibility of connection in left and right version, in the amount of 8 holes). Suspended Dn 52.

EQUIPMENT:

External hydrant cabinet (Z). A Basket with a flat-folding hose \varnothing 52 (20 m or 15 m) and a Pwh \varnothing 52 nozzle (connected to the hose). GP 6 powder fire extinguisher. ZH \varnothing 52 hydrant valve.

CONSTRUCTION:

Hydrant cabinet material - Steel sheet or Stainless steel sheet.
Anti-corrosion protection - Phosphating and possibly a zinc primer. Paint Coating - Powder paint.

ID:

Safety mark Internal hydrant PN-EN ISO 7010-2012.
Certificate number, User's manual, Manufacturer's data, Rating plate.

WORKING PRESSURE:

From 0,2 to 0,7Mpa.

MINIMUM FLOW RATE FOR NOZZLE DIAMETER 13MM

120L/0,2 MPa.

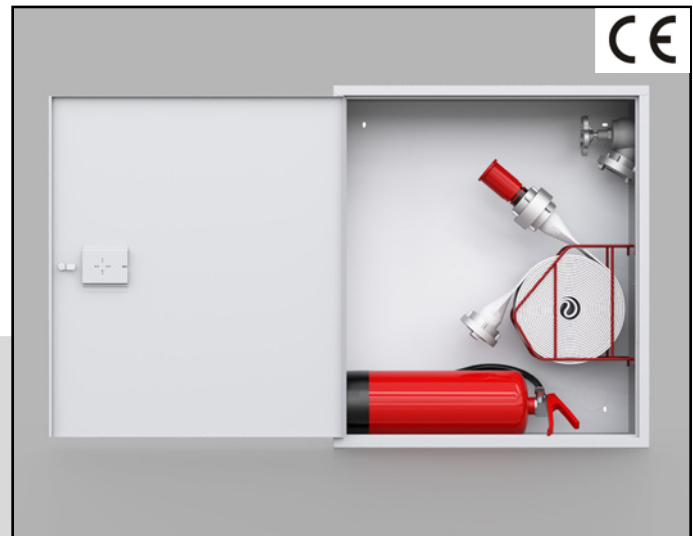
INSTALLATION METHOD:

Universal model, with the possibility of connecting to the left or right side.

COMPLIANCE WITH THE STANDARD: EN-671-2.



Hydrant HWZ - 52SK1 - G - 810 x 700 x 250 white



TYPE:	HWZ-52 - Suspended Internal Hydrant
SYMBOL:	HWZ- 52SK1-G – Standard Basket + Fire extinguisher
DIMENSIONS:	810x700x250
TYPE OF LOCK:	Patent lock
TYPE OF DOOR:	Full door, The cabinet door can be opened 180°

PRODUCT DESCRIPTION:

Hydrant cabinet made of sheet metal painted in color white (RAL 9003), The cabinet door can be opened 180°. Universal Model (possibility of connection in left and right version, in the amount of 8 holes). Suspended Dn 52.

EQUIPMENT:

External hydrant cabinet (Z). A Basket with a flat-folding hose \varnothing 52 (20 m or 15 m) and a Pwh \varnothing 52 nozzle (connected to the hose). GP 6 powder fire extinguisher. ZH \varnothing 52 hydrant valve.

CONSTRUCTION:

Hydrant cabinet material - Steel sheet or Stainless steel sheet.
Anti-corrosion protection - Phosphating and possibly a zinc primer. Paint Coating - Powder paint.

ID:

Safety mark Internal hydrant PN-EN ISO 7010-2012.
Certificate number, User's manual, Manufacturer's data, Rating plate.

WORKING PRESSURE:

From 0,2 to 0,7Mpa.

MINIMUM FLOW RATE FOR NOZZLE DIAMETER 13MM

120L/0,2 MPa.

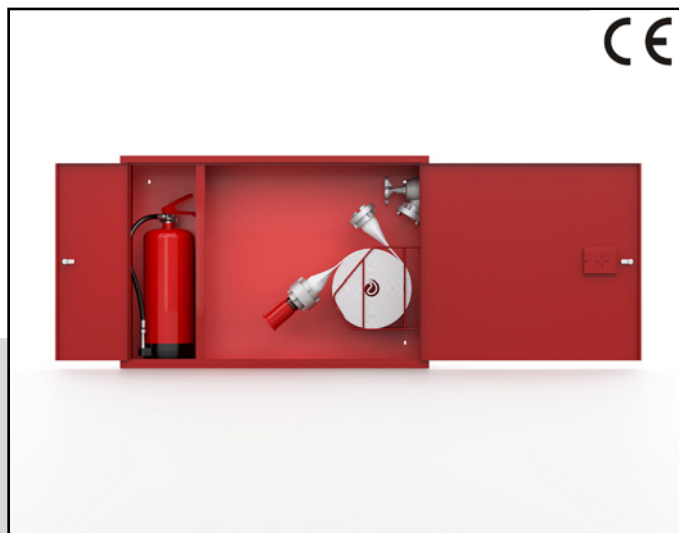
INSTALLATION METHOD:

Universal model, with the possibility of connecting to the left or right side.

COMPLIANCE WITH THE STANDARD: EN-671-2.



Hydrant HWZ - 52SK1 - GK - 650 x 940 x 250 red



TYPE:	HWZ-52 - Suspended Internal Hydrant
SYMBOL:	HWZ- 52SK1-GK- Standard Basket + Fire extinguisher
DIMENSIONS:	650x940x250
TYPE OF LOCK:	Patent lock
TYPE OF DOOR:	Full door, The cabinet door can be opened 180° + Additional door with fire extinguisher.

PRODUCT DESCRIPTION:

Hydrant cabinet made of sheet metal painted in color red (RAL 3000), The cabinet door can be opened 180°. Universal Model (possibility of connection in left and right version,). Additional door with fire extinguisher. Suspended Dn 52.

EQUIPMENT:

Hinged hydrant cabinet (Z). A basket with a \varnothing 52 flat-fold hose (20 m or 15 m) and a Pwh \varnothing 52 nozzle (connected to the hose). GP 6 powder fire extinguisher. ZH \varnothing 52 hydrant valve.

CONSTRUCTION:

Hydrant cabinet material - steel sheet or stainless steel sheet.
Anti-corrosion protection - phosphating and possibly a zinc primer. Paint Coating - powder paint.

ID:

Safety mark Internal hydrant PN-EN ISO 7010-2012.
Certificate number, User's manual, Manufacturer's data, Rating plate.

WORKING PRESSURE:

From 0,2 to 0,7Mpa.

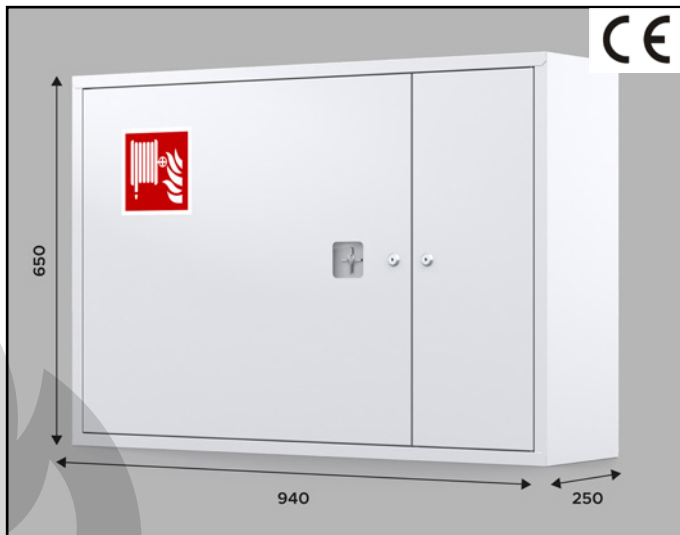
MINIMUM FLOW RATE FOR NOZZLE DIAMETER 13MM

120L/0,2 MPa.

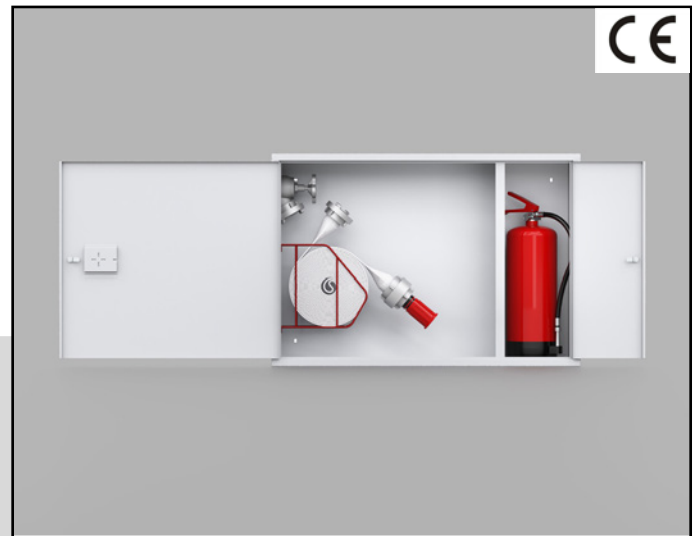
INSTALLATION METHOD:

Universal model, with the possibility of connecting to the left or right side

COMPLIANCE WITH THE STANDARD: EN-671-2.



Hydrant HWZ - 52SK1 - GK - 650 x 940 x 250 white



TYPE:	HWZ-52 - Suspended Internal Hydrant
SYMBOL:	HWZ- 52SK1-GK- Standard Basket + Fire extinguisher
DIMENSIONS:	650x940x250
TYPE OF LOCK:	Patent lock
TYPE OF DOOR:	Full door, The cabinet door can be opened 180° + Additional door with fire extinguisher.

PRODUCT DESCRIPTION:

Hydrant cabinet made of sheet metal painted in color white (RAL 9003), The cabinet door can be opened 180°. Universal Model (possibility of connection in left and right version,) Additional door with fire extinguisher. Suspended Dn 52.

EQUIPMENT:

Hinged hydrant cabinet (Z). A basket with a ø 52 flat-fold hose (20 m or 15 m) and a Pwh ø 52 nozzle (connected to the hose). GP 6 powder fire extinguisher. ZH ø 52 hydrant valve.

CONSTRUCTION:

Hydrant cabinet material - steel sheet or stainless steel sheet.
Anti-corrosion protection - phosphating and possibly a zinc primer. Paint Coating - powder paint.

ID:

Safety mark Internal hydrant PN-EN ISO 7010-2012.
Certificate number, User's manual, Manufacturer's data, Rating plate.

WORKING PRESSURE:

From 0,2 to 0,7Mpa.

MINIMUM FLOW RATE FOR NOZZLE DIAMETER 13MM

120L/0,2 MPa.

INSTALLATION METHOD:

Universal model, with the possibility of connecting to the left or right side.

COMPLIANCE WITH THE STANDARD: EN-671-2.



Hydrant HWZB - 52SK1 - 560 x 250 x 560 red



TYPE:	HWZB-52 - Suspended Internal Hydranty
SYMBOL:	HWZB- 52SK1 - Standard basket
DIMENSIONS:	560x560x250
TYPE OF LOCK:	Patent lock
TYPE OF DOOR:	Side door

PRODUCT DESCRIPTION:

Hydrant cabinet made of sheet metal painted in color red (RAL 3000).
Way of connection from above, from the side of the cabinet door. Suspended Dn 52.

EQUIPMENT:

Hinged hydrant cabinet (Z). A basket with a \varnothing 52 flat-fold hose (20 m or 15 m) and a Pwh \varnothing 52 nozzle (connected to the hose). ZH \varnothing 52 hydrant valve.

CONSTRUCTION:

Hydrant cabinet material - Steel sheet or stainless steel sheet.
Anti-corrosion protection - Phosphating and possibly a zinc primer. Paint Coating - powder paint.

ID:

Safety Mark Internal hydrant PN-EN ISO 7010-2012.
Certificate number, User's manual, Manufacturer's data, Rating plate.

WORKING PRESSURE:

From 0,2 to 0,7Mpa.

MINIMUM FLOW RATE FOR NOZZLE DIAMETER 13MM

120L/0,2 MPa.

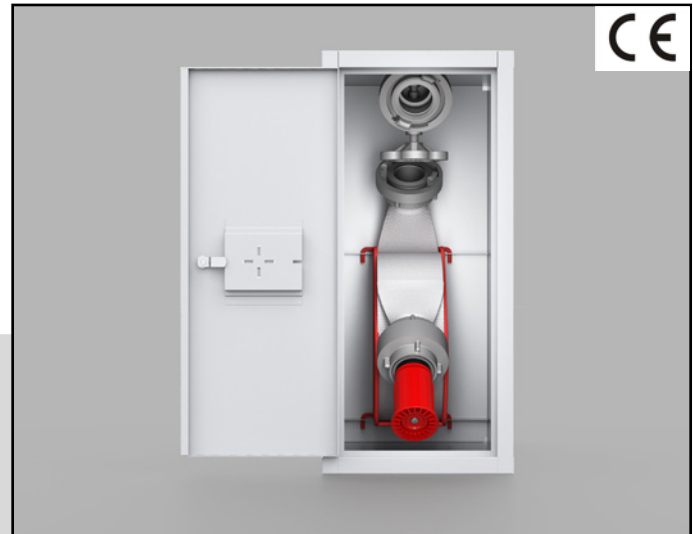
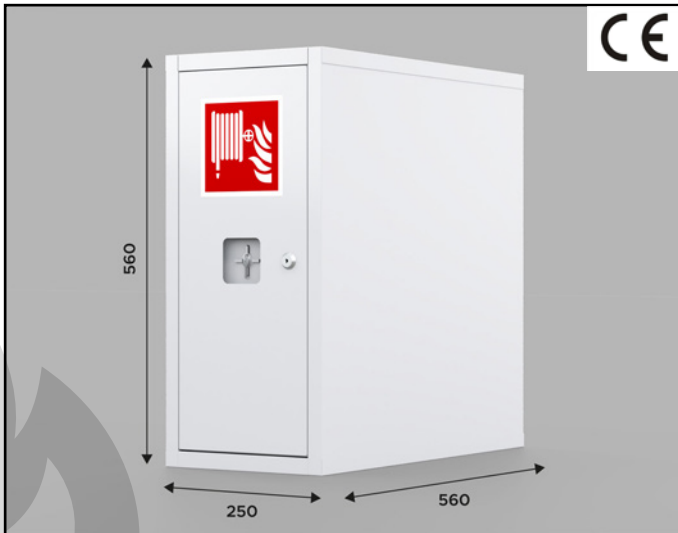
INSTALLATION METHOD:

Construction with the possibility of top connection from the side of the cabinet door.

COMPLIANCE WITH THE STANDARD: EN-671-2.



Hydrant HWZB - 52SK1 - 560 x 250 x 560 white



TYPE:	HWZB-52 - Suspended Internal Hydranty
SYMBOL:	HWZB- 52SK1 - Standard basket
DIMENSIONS:	560x560x250
TYPE OF LOCK:	Patent lock
TYPE OF DOOR:	Side door

PRODUCT DESCRIPTION:

Hydrant cabinet made of sheet metal painted in color red (RAL 3000).
Way of connection from above, from the side of the cabinet door. Suspended Dn 52.

EQUIPMENT:

Hinged hydrant cabinet (Z). A basket with a \varnothing 52 flat-fold hose (20 m or 15 m) and a Pwh \varnothing 52 nozzle (connected to the hose). ZH \varnothing 52 hydrant valve.

CONSTRUCTION:

Hydrant cabinet material - Steel sheet or stainless steel sheet.
Anti-corrosion protection - Phosphating and possibly a zinc primer. Paint Coating - powder paint.

ID:

Safety Mark Internal hydrant PN-EN ISO 7010-2012.
Certificate number, User's manual, Manufacturer's data, Rating plate.

WORKING PRESSURE:

From 0,2 to 0,7Mpa.

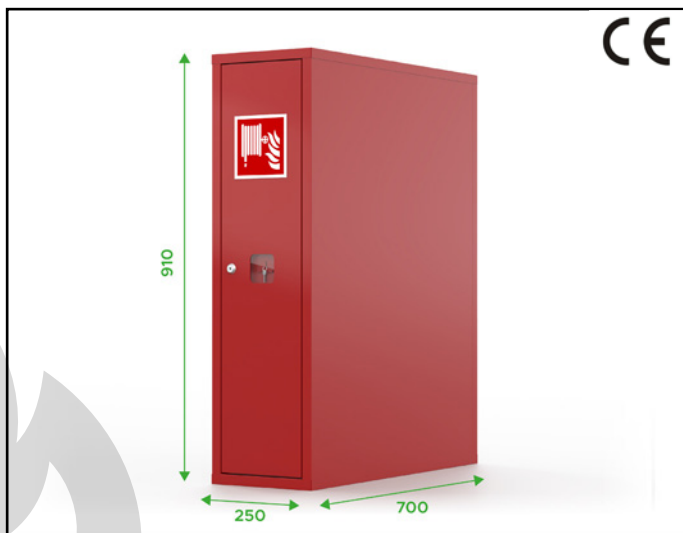
MINIMUM FLOW RATE FOR NOZZLE DIAMETER 13MM

120L/0,2 MPa.

INSTALLATION METHOD:

Construction with the possibility of top connection from the side of the cabinet door.

COMPLIANCE WITH THE STANDARD: EN-671-2.



Hydrant HWZB - 52SK1 - G - 910 x 250 x 700 red



TYPE:	HWZ-52 - Suspended Internal Hydrant
SYMBOL:	HWZB- 52SK1 - G – Standard Basket + Fire extinguisher
DIMENSIONS:	910x250x700
TYPE OF LOCK:	Patent lock
TYPE OF DOOR:	Side door

PRODUCT DESCRIPTION:

Hydrant cabinet made of sheet metal painted in color red (RAL 3000).
Way of connection from above, from the side of the cabinet door. Suspended Dn 52.

EQUIPMENT:

Hinged hydrant cabinet (Z). A basket with a \varnothing 52 flat-fold hose (20 m or 15 m) and a Pwh \varnothing 52 nozzle (connected to the hose). GP 6 powder fire extinguisher. ZH \varnothing 52 hydrant valve

CONSTRUCTION:

Hydrant cabinet material - steel sheet or stainless steel sheet.
Anti-corrosion protection - phosphating and possibly a zinc primer. Paint Coating - powder paint.

ID:

Safety mark Internal hydrant PN-EN ISO 7010-2012.
Certificate number, User's manual, Manufacturer's data, Rating plate.

WORKING PRESSURE:

From 0,2 to 0,7Mpa.

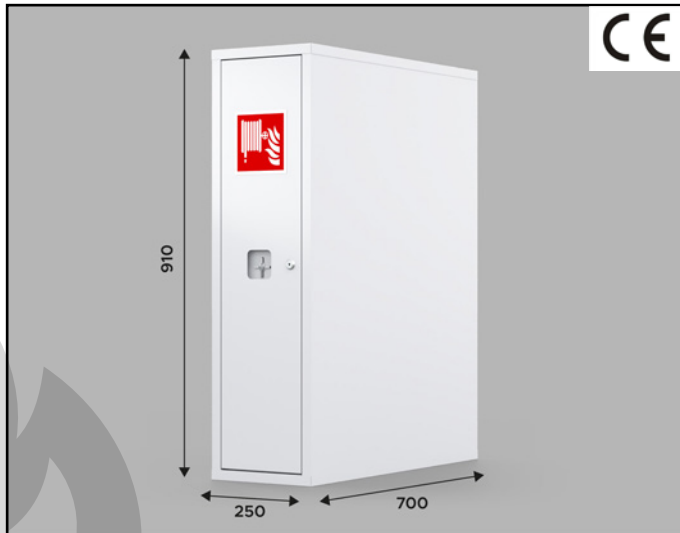
MINIMUM FLOW RATE FOR NOZZLE DIAMETER 13MM

120L/0,2 MPa.

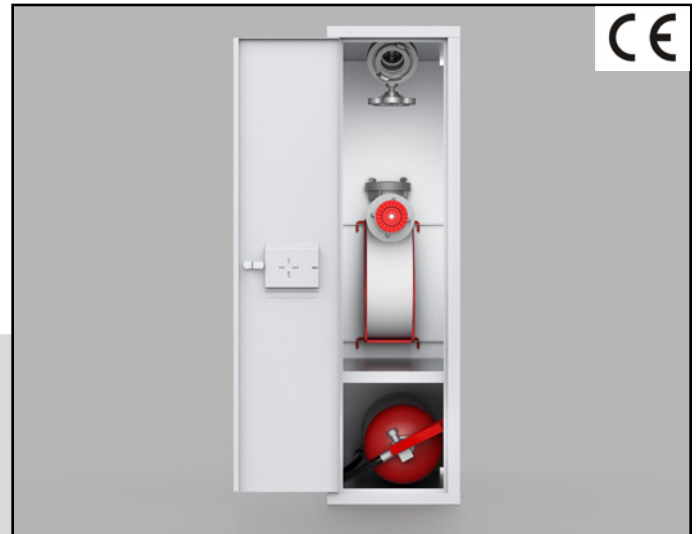
INSTALLATION METHOD:

Construction with the possibility of top connection from the side of the cabinet door.

COMPLIANCE WITH THE STANDARD: EN-671-2.



Hydrant HWZB - 52SK1 - G - 910 x 250 x 700 white



TYPE:	HWZ-52 - Suspended Internal Hydrant
SYMBOL:	HWZB- 52SK1 - G – Standard Basket + Fire extinguisher
DIMENSIONS:	910x250x700
TYPE OF LOCK:	Patent lock
TYPE OF DOOR:	Side door

PRODUCT DESCRIPTION:

Hydrant cabinet made of sheet metal painted in color white (RAL 9003).
Way of connection from above, from the side of the cabinet door. Suspended Dn 52.

EQUIPMENT:

Hinged hydrant cabinet (Z). A basket with a \varnothing 52 flat-fold hose (20 m or 15 m) and a Pwh \varnothing 52 nozzle (connected to the hose). GP 6 powder fire extinguisher. ZH \varnothing 52 hydrant valve

CONSTRUCTION:

Hydrant cabinet material - steel sheet or stainless steel sheet.
Anti-corrosion protection - phosphating and possibly a zinc primer. Paint Coating - powder paint.

ID:

Safety mark Internal hydrant PN-EN ISO 7010-2012.
Certificate number, User's manual, Manufacturer's data, Rating plate.

WORKING PRESSURE:

From 0,2 to 0,7Mpa.

MINIMUM FLOW RATE FOR NOZZLE DIAMETER 13MM

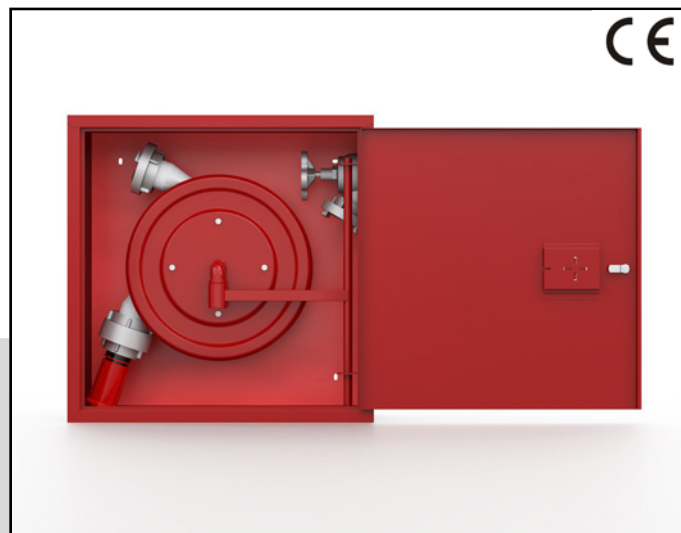
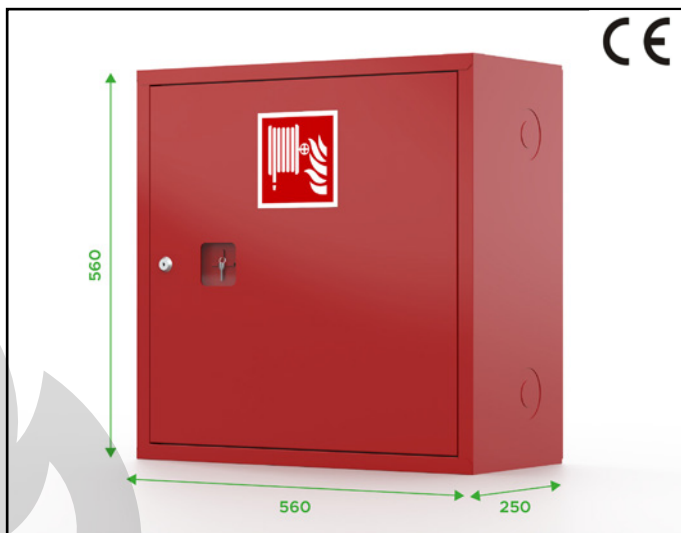
120L/0,2 MPa.

INSTALLATION METHOD:

Construction with the possibility of top connection from the side of the cabinet door.

COMPLIANCE WITH THE STANDARD: EN-671-2.

Hydrant HWZ - 52SZ1 - 560 x 560 x 250 red



TYPE:	HWZ-52 Suspended Internal Hydrant
SYMBOL:	HWZ- 52SZ1 - Standard reel
DIMENSIONS:	560x560x250
TYPE OF LOCK:	Patent lock
TYPE OF DOOR:	Full door, The cabinet door can be opened 180°

PRODUCT DESCRIPTION:

Hydrant cabinet made of sheet metal painted in color red (RAL 3000), The cabinet door can be opened 180°. Universal Model (possibility of connection in left and right version, in the amount of 8 holes). Suspended Dn 52.

EQUIPMENT:

External hydrant cabinet (Z). A reel with a flat-folding hose \varnothing 52 (20 m or 15 m) and a Pwh \varnothing 52 nozzle (connected to the hose). ZH \varnothing 52 hydrant valve.

CONSTRUCTION:

Hydrant Cabinet Material - Steel Sheet or Stainless Steel Sheet.
Anti-corrosion protection - phosphating and possibly a zinc primer. Paint Coating - Powder paint.

ID:

Safety Mark Internal Hydrant PN-EN ISO 7010-2012.
Certificate number, User's manual, Manufacturer's data, Rating plate.

WORKING PRESSURE:

From 0,2 to 0,7Mpa.

MINIMUM FLOW RATE FOR NOZZLE DIAMETER 13MM

120L/0,2 MPa.

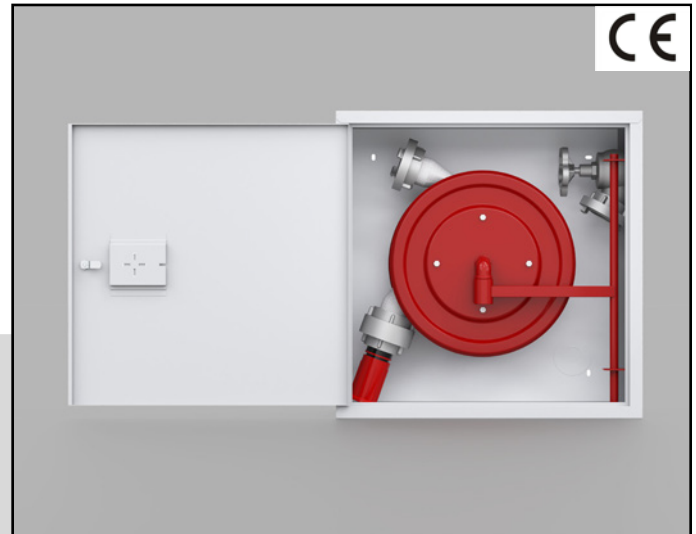
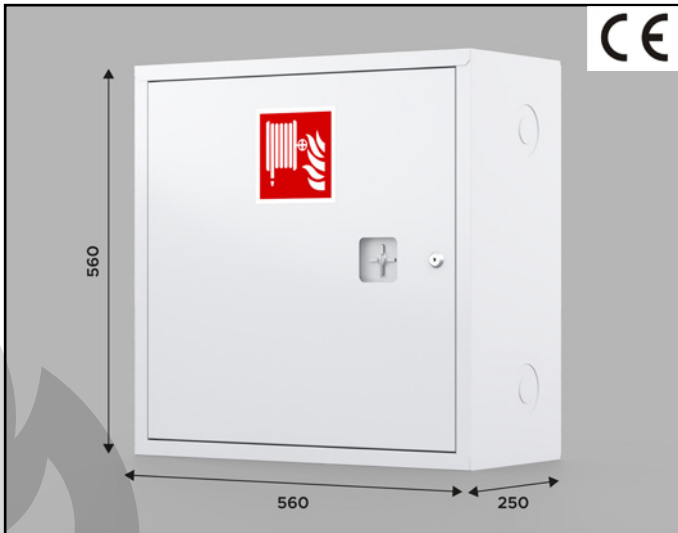
INSTALLATION METHOD:

Universal model, with the possibility of connecting to the left or right side.

COMPLIANCE WITH THE STANDARD: EN-671-2.



Hydrant HWZ - 52SZ1 - 560 x 560 x 250 white



TYPE:	HWZ-52 Suspended Internal Hydrant
SYMBOL:	HWZ- 52SZ1 - Standard reel
DIMENSIONS:	560x560x250
TYPE OF LOCK:	Patent lock
TYPE OF DOOR:	Full door, The cabinet door can be opened 180°

PRODUCT DESCRIPTION:

Hydrant cabinet made of sheet metal painted in color white (RAL 9003), The cabinet door can be opened 180°. Universal Model (possibility of connection in left and right version, in the amount of 8 holes). Suspended Dn 52.

EQUIPMENT:

External hydrant cabinet (Z). A reel with a flat-folding hose \varnothing 52 (20 m or 15 m) and a Pwh \varnothing 52 nozzle (connected to the hose). ZH \varnothing 52 hydrant valve.

CONSTRUCTION:

Hydrant Cabinet Material - Steel Sheet or Stainless Steel Sheet.
Anti-corrosion protection - phosphating and possibly a zinc primer. Paint Coating - Powder paint.

ID:

Safety Mark Internal Hydrant PN-EN ISO 7010-2012.
Certificate number, User's manual, Manufacturer's data, Rating plate.

WORKING PRESSURE:

From 0,2 to 0,7Mpa.

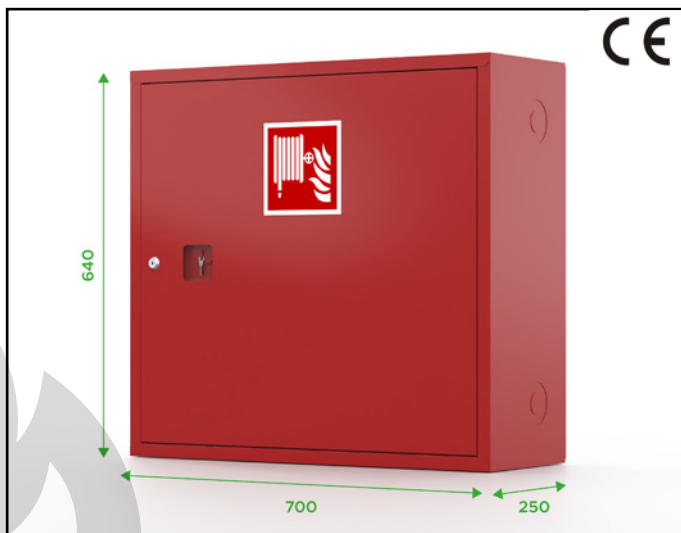
MINIMUM FLOW RATE FOR NOZZLE DIAMETER 13MM

120L/0,2 MPa.

INSTALLATION METHOD:

Universal model, with the possibility of connecting to the left or right side.

COMPLIANCE WITH THE STANDARD: EN-671-2.



Hydrant HWZ - 52SZ1 - G - 640 x 700 x 250 red



TYPE:	HWZ-52 - Suspended Internal Hydrant
SYMBOL:	HWZ- 52SZ1 - G – Standard reel + Fire extinguisher
DIMENSIONS:	640x700x250
TYPE OF LOCK:	Patent lock
TYPE OF DOOR:	Full door, The cabinet door can be opened 180°

PRODUCT DESCRIPTION:

Hydrant cabinet made of sheet metal painted in color red (RAL 3000), The cabinet door can be opened 180°. Universal Model (possibility of connection in left and right version, in the amount of 8 holes). Suspended Dn 52.

EQUIPMENT:

Hinged hydrant cabinet (Z). A reel with a ø 52 flat-fold hose (20 m or 15 m) and a Pwh ø 52 nozzle (connected to the hose). GP 6 powder fire extinguisher. ZH ø 52 hydrant valve.

CONSTRUCTION:

Hydrant cabinet material - steel sheet or stainless steel sheet.
Anti-corrosion protection - phosphating and possibly a zinc primer. Paint Coating - powder paint..

ID:

Safety mark Internal hydrant PN-EN ISO 7010-2012.
Certificate number, User’s manual, Manufacturer’s data, Rating plate.

WORKING PRESSURE:

From 0,2 to 0,7Mpa.

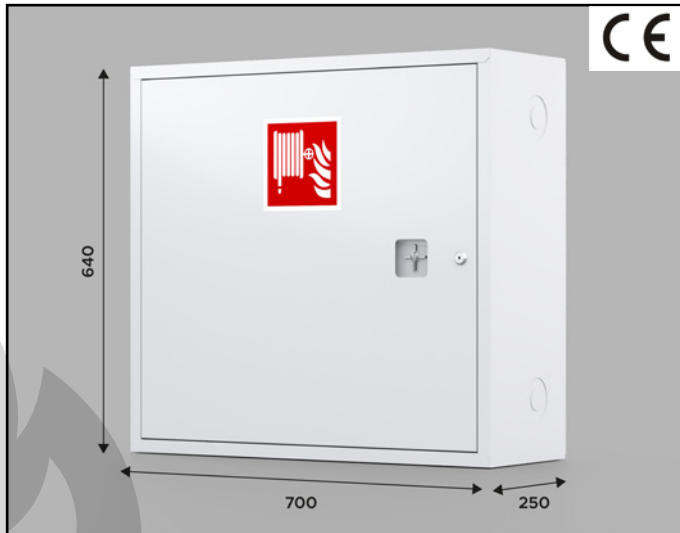
MINIMUM FLOW RATE FOR NOZZLE DIAMETER 13MM

120L/0,2 MPa.

INSTALLATION METHOD:

Universal Model ,possibility of connection in left and right version.

COMPLIANCE WITH THE STANDARD: EN-671-2.



Hydrant HWZ - 52SZ1 - G - 640 x 700 x 250 white



TYPE:	HWZ-52 - Suspended Internal Hydrant
SYMBOL:	HWZ- 52SZ1 - G – Standard reel + Fire extinguisher
DIMENSIONS:	640x700x250
TYPE OF LOCK:	Patent lock
TYPE OF DOOR:	Full door, The cabinet door can be opened 180°

PRODUCT DESCRIPTION:

Hydrant cabinet made of sheet metal painted in color white (RAL 9003), The cabinet door can be opened 180°. Universal Model (possibility of connection in left and right version, in the amount of 8 holes). Suspended Dn 52.

EQUIPMENT:

Hinged hydrant cabinet (Z). A reel with a ø 52 flat-fold hose (20 m or 15 m) and a Pwh ø 52 nozzle (connected to the hose). GP 6 powder fire extinguisher. ZH ø 52 hydrant valve.

CONSTRUCTION:

Hydrant cabinet material - steel sheet or stainless steel sheet.
Anti-corrosion protection - phosphating and possibly a zinc primer. Paint Coating - powder paint..

ID:

Safety mark Internal hydrant PN-EN ISO 7010-2012.
Certificate number, User's manual, Manufacturer's data, Rating plate.

WORKING PRESSURE:

From 0,2 to 0,7Mpa.

MINIMUM FLOW RATE FOR NOZZLE DIAMETER 13MM

120L/0,2 MPa.

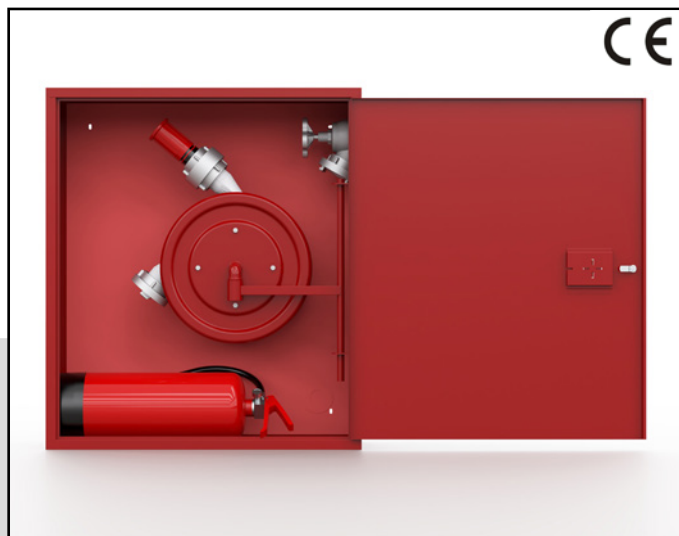
INSTALLATION METHOD:

Universal Model ,possibility of connection in left and right version.

COMPLIANCE WITH THE STANDARD: EN-671-2.



Hydrant HWZ - 52SZ1 - G - 810 x 700 x 250 red



TYPE:	HWZ-52 - Suspended Internal Hydrant
SYMBOL:	HWZ- 52SZ1-G – Standard reel + Fire extinguisher
DIMENSIONS:	810x250x700
TYPE OF LOCK:	Patent lock
TYPE OF DOOR:	Full door, The cabinet door can be opened 180°

PRODUCT DESCRIPTION:

Hydrant cabinet made of sheet metal painted in color red (RAL 3000), The cabinet door can be opened 180°. Universal Model (possibility of connection in left and right version, in the amount of 8 holes). Suspended Dn 52.

EQUIPMENT:

External hydrant cabinet (Z). A reel with a ø 52 flat-fold hose (20 m or 15 m) and a Pwh ø 52 nozzle (connected to the hose). GP 6 powder fire extinguisher. ZH ø 52 hydrant valve.

CONSTRUCTION:

Hydrant cabinet material - steel sheet or stainless steel sheet.
Anti-corrosion protection - phosphating and possibly a zinc primer. Paint Coating - powder paint..

ID:

Safety mark Internal hydrant PN-EN ISO 7010-2012.
Certificate number, User's manual, Manufacturer's data, Rating plate.

WORKING PRESSURE:

From 0,2 to 0,7Mpa.

MINIMUM FLOW RATE FOR NOZZLE DIAMETER 13MM

120L/0,2 MPa.

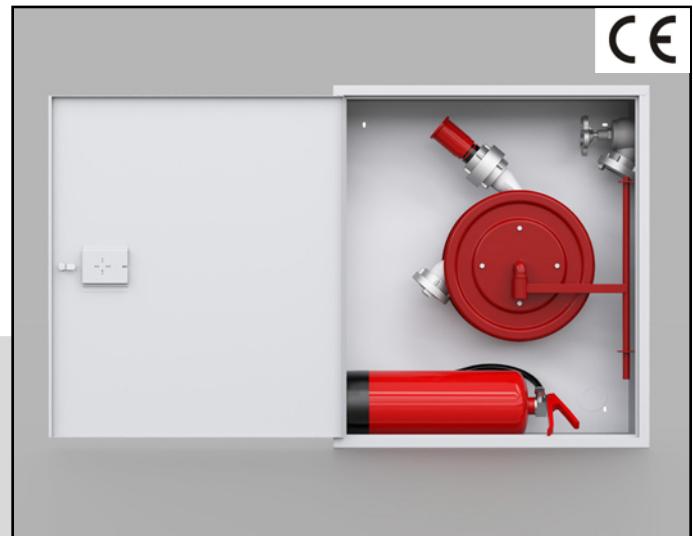
INSTALLATION METHOD:

Universal Model possibility of connection in left and right version.

COMPLIANCE WITH THE STANDARD: EN-671-2.



Hydrant HWZ - 52SZ1 - G - 810 x 700 x 250 white



TYPE:	HWZ-52 - Suspended Internal Hydrant
SYMBOL:	HWZ- 52SZ1-G – Standard reel + Fire extinguisher
DIMENSIONS:	810x250x700
TYPE OF LOCK:	Patent lock
TYPE OF DOOR:	Full door, The cabinet door can be opened 180°

PRODUCT DESCRIPTION:

Hydrant cabinet made of sheet metal painted in color white (RAL 9003), The cabinet door can be opened 180°. Universal Model (possibility of connection in left and right version, in the amount of 8 holes). Suspended Dn 52.

EQUIPMENT:

External hydrant cabinet (Z). A reel with a \varnothing 52 flat-fold hose (20 m or 15 m) and a Pwh \varnothing 52 nozzle (connected to the hose). GP 6 powder fire extinguisher. ZH \varnothing 52 hydrant valve.

CONSTRUCTION:

Hydrant cabinet material - steel sheet or stainless steel sheet.
Anti-corrosion protection - phosphating and possibly a zinc primer. Paint Coating - powder paint..

ID:

Safety mark Internal hydrant PN-EN ISO 7010-2012.
Certificate number, User's manual, Manufacturer's data, Rating plate.

WORKING PRESSURE:

From 0,2 to 0,7Mpa.

MINIMUM FLOW RATE FOR NOZZLE DIAMETER 13MM

120L/0,2 MPa.

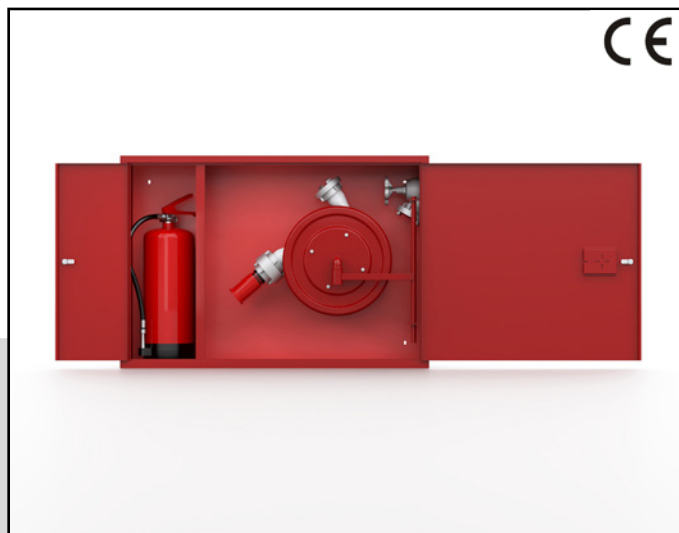
INSTALLATION METHOD:

Universal Model possibility of connection in left and right version.

COMPLIANCE WITH THE STANDARD: EN-671-2.



Hydrant HWZ - 52SZ 1 - GK - 650 x 940 x 250 red



TYPE:	HWZ-52 - Suspended Internal Hydrant
SYMBOL:	HWZ- 52SZ1 - GK Standard reel + Fire extinguisher
DIMENSIONS:	650x940x250
TYPE OF LOCK:	Patent lock
TYPE OF DOOR:	Full door + Additional door for fire extinguisher

PRODUCT DESCRIPTION:

Hydrant cabinet made of sheet metal painted in color red (RAL 3000). Universal construction with the possibility of connecting to, on the left or right side of the hydrant valve. The cabinet door can be opened by 180° + Additional door for fire extinguishers. Suspended Dn 52.

EQUIPMENT:

Hinged hydrant cabinet (Z). A reel with a \varnothing 52 flat-fold hose (20 m or 15 m) and a Pwh \varnothing 52 nozzle (connected to the hose). GP 6 powder fire extinguisher. ZH \varnothing 52 hydrant valve

CONSTRUCTION:

Hydrant cabinet material - steel sheet or stainless steel sheet.
Anti-corrosion protection - phosphating and possibly a zinc primer. Paint Coating - powder paint.

ID:

Safety mark Internal hydrant PN-EN ISO 7010-2012.
Certificate number, User's manual, Manufacturer's data, Rating plate.

WORKING PRESSURE:

From 0,2 to 0,7Mpa.

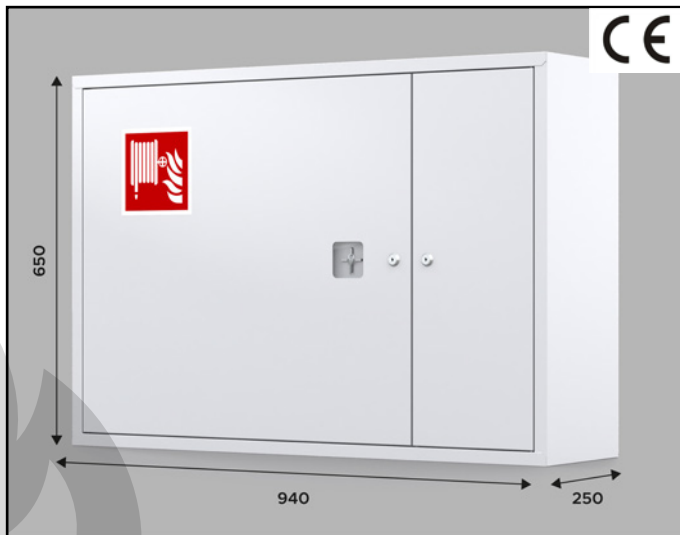
MINIMUM FLOW RATE FOR NOZZLE DIAMETER 13MM

120L/0,2 MPa.

INSTALLATION METHOD:

Universal construction with the possibility of connecting to, on the left or right side.

COMPLIANCE WITH THE STANDARD: EN-671-2.



Hydrant HWZ - 52SZ 1 - GK - 650 x 940 x 250 white



TYPE:	HWZ-52 - Suspended Internal Hydrant
SYMBOL:	HWZ- 52SZ1 - GK - Standard reel + Fire extinguisher
DIMENSIONS:	650x940x250
TYPE OF LOCK:	Patent lock
TYPE OF DOOR:	Full door + Additional door for fire extinguisher

PRODUCT DESCRIPTION:

Hydrant cabinet made of sheet metal painted in color white (RAL 9003). Universal construction with the possibility of connecting to, on the left or right side of the hydrant valve. The cabinet door can be opened by 180° + Additional door for fire extinguishers. Suspended Dn 52.

EQUIPMENT:

Hinged hydrant cabinet (Z). A reel with a \varnothing 52 flat-fold hose (20 m or 15 m) and a Pwh \varnothing 52 nozzle (connected to the hose). GP 6 powder fire extinguisher. ZH \varnothing 52 hydrant valve.

CONSTRUCTION:

Hydrant cabinet material - steel sheet or stainless steel sheet.
Anti-corrosion protection - phosphating and possibly a zinc primer. Paint Coating - powder paint.

ID:

Safety mark Internal hydrant PN-EN ISO 7010-2012.
Certificate number, User's manual, Manufacturer's data, Rating plate.

WORKING PRESSURE:

From 0,2 to 0,7Mpa.

MINIMUM FLOW RATE FOR NOZZLE DIAMETER 13MM

120L/0,2 MPa.

INSTALLATION METHOD:

Universal construction with the possibility of connecting to, on the left or right side.

COMPLIANCE WITH THE STANDARD: EN-671-2.

Hydrant HWZB - 52SZ1 - 560 x 250 x 560 red



TYPE:	HWZ-52 - Suspended Internal Hydranty
SYMBOL:	HWZB- 52SZ1 - Standard reel
DIMENSIONS:	560x250x560
TYPE OF LOCK:	Patent lock
TYPE OF DOOR:	Side door

PRODUCT DESCRIPTION:

Hydrant cabinet made of sheet metal painted in color red (RAL 3000).
Way of connection from above, from the side of the cabinet door. Suspended Dn 52.

EQUIPMENT:

External hydrant cabinet (Z). A reel with a \varnothing 52 flat-fold hose (20 m or 15 m) and a Pwh \varnothing 52 nozzle (connected to the hose). ZH \varnothing 52 hydrant valve.

CONSTRUCTION:

Hydrant cabinet material - Steel sheet or stainless steel sheet.
Anti-corrosion protection - Phosphating and possibly a zinc primer. Paint Coating - Powder paint.

ID:

Safety mark Internal hydrant PN-EN ISO 7010-2012.
Certificate number, User's manual, Manufacturer's data, Rating plate.

WORKING PRESSURE:

From 0,2 to 0,7Mpa.

MINIMUM FLOW RATE FOR NOZZLE DIAMETER 13MM

120L/0,2 MPa.

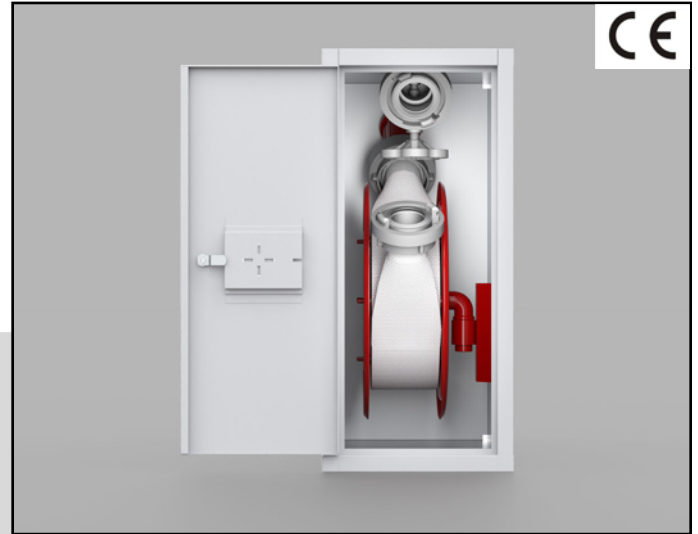
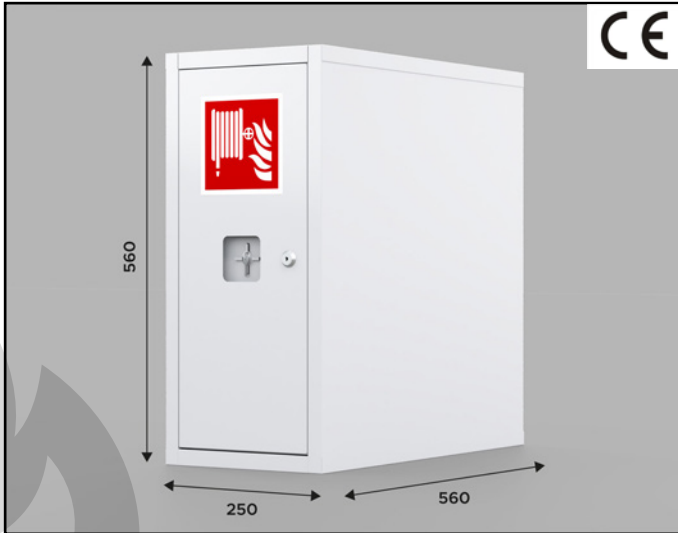
INSTALLATION METHOD:

Construction with the possibility of top connection from the side of the cabinet door.

COMPLIANCE WITH THE STANDARD: EN-671-2.



Hydrant HWZB - 52SZ1 - 560 x 250 x 560 white



TYPE:	HWZ-52 - Suspended Internal Hydranty
SYMBOL:	HWZB- 52SZ1 - Standard reel
DIMENSIONS:	560x250x560
TYPE OF LOCK:	Patent lock
TYPE OF DOOR:	Side door

PRODUCT DESCRIPTION:

Hydrant cabinet made of sheet metal painted in color red (RAL 3000).
Way of connection from above, from the side of the cabinet door. Suspended Dn 52.

EQUIPMENT:

External hydrant cabinet (Z). A reel with a \varnothing 52 flat-fold hose (20 m or 15 m) and a Pwh \varnothing 52 nozzle (connected to the hose). ZH \varnothing 52 hydrant valve.

CONSTRUCTION:

Hydrant cabinet material - Steel sheet or stainless steel sheet.
Anti-corrosion protection - Phosphating and possibly a zinc primer. Paint Coating - Powder paint.

ID:

Safety mark Internal hydrant PN-EN ISO 7010-2012.
Certificate number, User's manual, Manufacturer's data, Rating plate.

WORKING PRESSURE:

From 0,2 to 0,7Mpa.

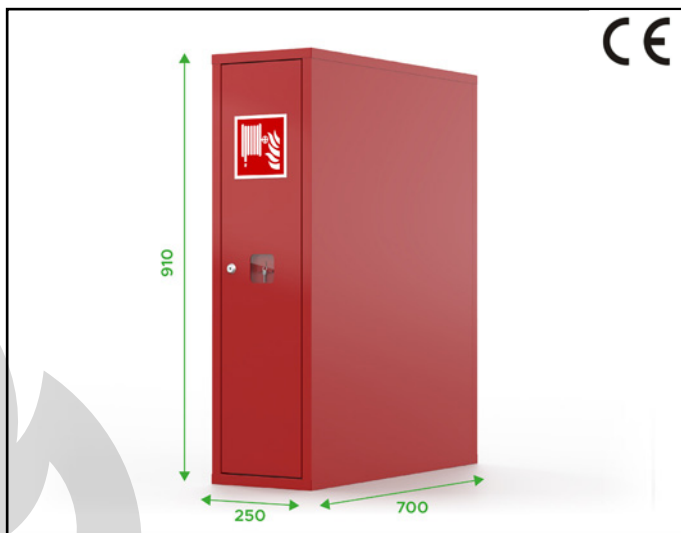
MINIMUM FLOW RATE FOR NOZZLE DIAMETER 13MM

120L/0,2 MPa.

INSTALLATION METHOD:

Construction with the possibility of top connection from the side of the cabinet door.

COMPLIANCE WITH THE STANDARD: EN-671-2.



Hydrant HWZB - 52SZ1 - G - 910 x 250 x 700 red



TYPE:	HWZ-52 - Suspended Internal Hydrant
SYMBOL:	HWZB- 52SZ1-G – Standard reel + Fire extinguisher
DIMENSIONS:	910x250x700
TYPE OF LOCK:	Patent lock
TYPE OF DOOR:	Side door

PRODUCT DESCRIPTION:

Hydrant cabinet made of sheet metal painted in color red (RAL 3000).
Way of connection from above, from the side of the cabinet door. Suspended Dn 52.

EQUIPMENT:

Hinged hydrant cabinet (Z). A reel with a \varnothing 52 flat-fold hose (20 m or 15 m) and a Pwh \varnothing 52 nozzle (connected to the hose). GP 6 powder fire extinguisher. ZH \varnothing 52 hydrant valve.

CONSTRUCTION:

Hydrant cabinet material - steel sheet or stainless steel sheet.
Anti-corrosion protection - phosphating and possibly a zinc primer. Paint Coating - powder paint.

ID:

Safety mark Internal hydrant PN-EN ISO 7010-2012.
Certificate number, User's manual, Manufacturer's data, Rating plate.

WORKING PRESSURE:

From 0,2 to 0,7Mpa.

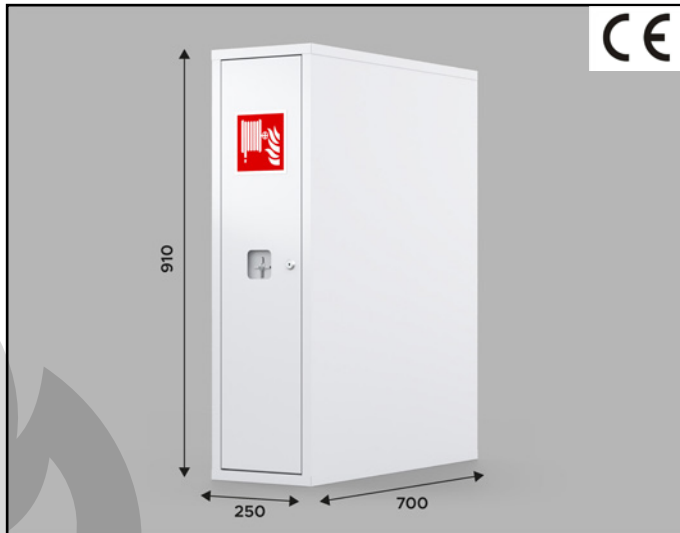
MINIMUM FLOW RATE FOR NOZZLE DIAMETER 13MM

120L/0,2 MPa.

INSTALLATION METHOD:

Construction with the possibility of top connection from the side of the cabinet door.

COMPLIANCE WITH THE STANDARD: EN-671-2.



Hydrant HWZB - 52SZ1 - G - 910 x 250 x 700 white



TYPE:	HWZ-52 - Suspended Internal Hydrant
SYMBOL:	HWZB- 52SZ1 - G – Standard reel + Fire extinguisher
DIMENSIONS:	910x250x700
TYPE OF LOCK:	Patent lock
TYPE OF DOOR:	Side door

PRODUCT DESCRIPTION:

Hydrant cabinet made of sheet metal painted in color red (RAL 3000).
Way of connection from above, from the side of the cabinet door. Suspended Dn 52.

EQUIPMENT:

Hinged hydrant cabinet (Z). A reel with a \varnothing 52 flat-fold hose (20 m or 15 m) and a Pwh \varnothing 52 nozzle (connected to the hose). GP 6 powder fire extinguisher. ZH \varnothing 52 hydrant valve.

CONSTRUCTION:

Hydrant cabinet material - steel sheet or stainless steel sheet.
Anti-corrosion protection - phosphating and possibly a zinc primer. Paint Coating - powder paint.

ID:

Safety mark Internal hydrant PN-EN ISO 7010-2012.
Certificate number, User's manual, Manufacturer's data, Rating plate.

WORKING PRESSURE:

From 0,2 to 0,7Mpa.

MINIMUM FLOW RATE FOR NOZZLE DIAMETER 13MM

120L/0,2 MPa.

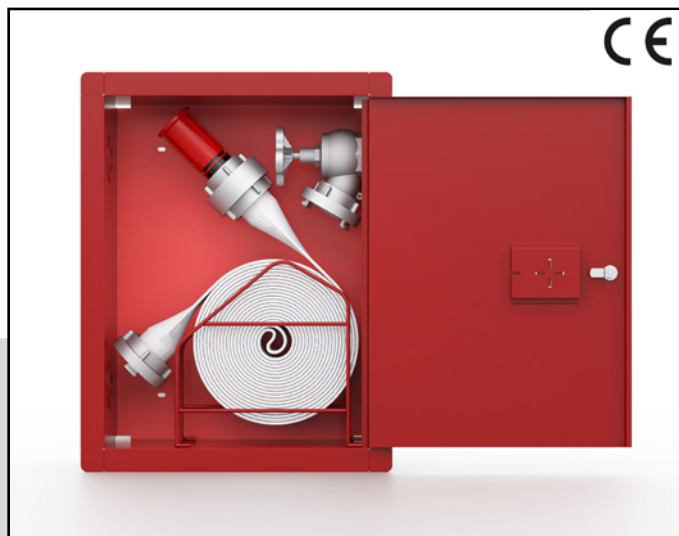
INSTALLATION METHOD:

Construction with the possibility of top connection from the side of the cabinet door.

COMPLIANCE WITH THE STANDARD: EN-671-2.



Hydrant HWW - 52SK1 - 530 x 400 x 180 red



TYPE:	HWW-52 - Recess Internal Hydrant
SYMBOL:	HWW – 52SK1 – Standard Basket
DIMENSIONS:	530 x 400 x 180
TYPE OF LOCK:	Patent lock
TYPE OF DOOR:	Full door, The cabinet door can be opened 180°

PRODUCT DESCRIPTION:

Hydrant cabinet made of sheet metal painted in color red (RAL 3000), The cabinet door opening 180°. Universal Model (possibility of connection in left and right version.) Recess Internal Dn 52.

EQUIPMENT:

Recesse hydrant cabinet (W). A basket with a flat-folding hose \varnothing 52 (20 m or 15 m) and a nozzle Pwh \varnothing 52 (connected to the hose). ZH \varnothing 52 hydrant valve

CONSTRUCTION:

Hydrant cabinet material - Steel sheet or Stainless steel sheet.
Anti-corrosion protection - Phosphating and Possibly a Zinc primer. Paint Coating - Powder paint.

ID:

Safety mark Internal hydrant PN-EN ISO 7010-2012.
Certificate number, User's manual, Manufacturer's data, Rating plate.

WORKING PRESSURE:

From 0,2 to 0,7Mpa.

MINIMUM FLOW RATE FOR NOZZLE DIAMETER 13MM

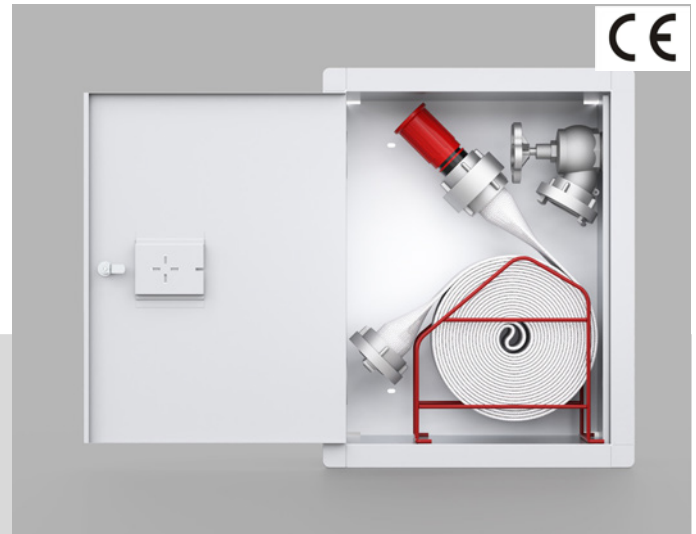
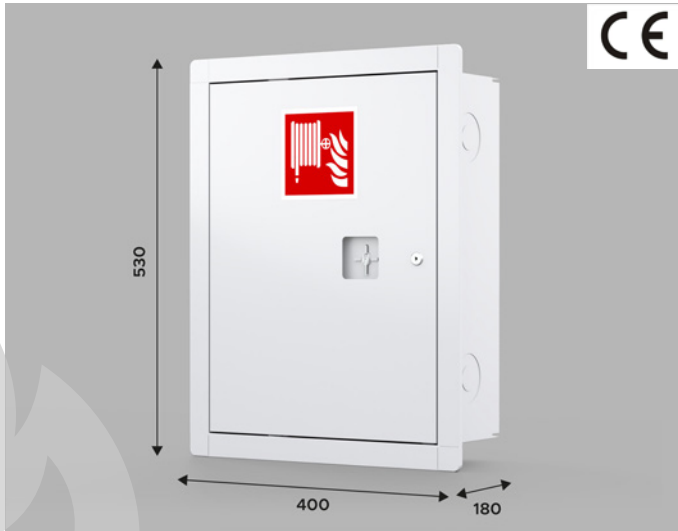
120L/0,2 MPa.

INSTALLATION METHOD:

Universal Model, possibility of connection in left and right version

COMPLIANCE WITH THE STANDARD: EN-671-2.

Hydrant HWW - 52SK1 - 530 x 400 x 180 white



TYPE:	HWW-52 - Recess Internal Hydrant
SYMBOL:	HWW – 52SK1 – Standard Basket
DIMENSIONS:	530 x 400 x 180
TYPE OF LOCK:	Patent lock
TYPE OF DOOR:	Full door, The cabinet door can be opened 180°

PRODUCT DESCRIPTION:

Hydrant cabinet made of sheet metal painted in color white (RAL 9003), The cabinet door opening 180°. Universal Model (possibility of connection in left and right version.) Recess Internal Dn 52.

EQUIPMENT:

Recesse hydrant cabinet (W). A basket with a flat-folding hose \varnothing 52 (20 m or 15 m) and a nozzle Pwh \varnothing 52 (connected to the hose). ZH \varnothing 52 hydrant valve

CONSTRUCTION:

Hydrant cabinet material - Steel sheet or Stainless steel sheet.
Anti-corrosion protection - Phosphating and Possibly a Zinc primer. Paint Coating - Powder paint.

ID:

Safety mark Internal hydrant PN-EN ISO 7010-2012.
Certificate number, User's manual, Manufacturer's data, Rating plate.

WORKING PRESSURE:

From 0,2 to 0,7Mpa.

MINIMUM FLOW RATE FOR NOZZLE DIAMETER 13MM

120L/0,2 MPa.

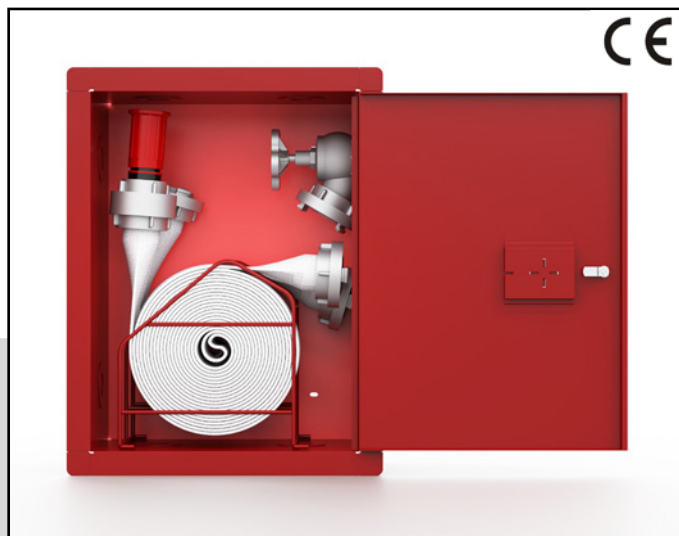
INSTALLATION METHOD:

Universal Model, possibility of connection in left and right version

COMPLIANCE WITH THE STANDARD: EN-671-2.



Hydrant HWW - 52SK2 - 530 x 400 x 240 red



TYPE:	HWW-52 - Recess Internal Hydrant
SYMBOL:	HWW – 52SK2 – 2x Standard Basket
DIMENSIONS:	530x400x240
TYPE OF LOCK:	Patent lock
TYPE OF DOOR:	Full door, The cabinet door can be opened 180°

PRODUCT DESCRIPTION:

Hydrant cabinet made of sheet metal painted in color red (RAL 3000), external door opening 180°. Universal Model (possibility of connection in left and right version.). Recess Internal Dn 52.

EQUIPMENT:

Recessed hydrant cabinet (W). A 2 baskets with a 2 x flat-folding hoses \varnothing 52 (20 m or 15 m) and a nozzle Pwh \varnothing 52 (connected to the hose). ZH \varnothing 52 hydrant valve.

CONSTRUCTION:

Hydrant cabinet material - Steel sheet or Stainless steel sheet.
Anti-corrosion protection - Phosphating and possibly a zinc primer. Paint Coating - powder paint.

ID:

Safety mark Internal hydrant PN-EN ISO 7010-2012.
Certificate number, User's manual, Manufacturer's data, Rating plate.

WORKING PRESSURE:

From 0,2 to 0,7Mpa.

MINIMUM FLOW RATE FOR NOZZLE DIAMETER 13MM

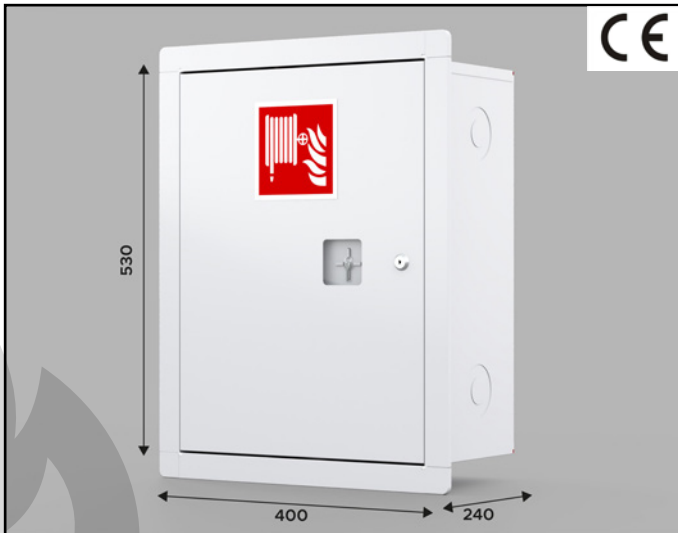
120L/0,2 MPa.

INSTALLATION METHOD:

Universal Model, possibility of connection in left and right version.

COMPLIANCE WITH THE STANDARD: EN-671-2.

Hydrant HWW - 52SK2 - 530 x 400 x 240 white



TYPE:	HWW-52 - Recess Internal Hydrant
SYMBOL:	HWW – 52SK2 – 2x Standard Basket
DIMENSIONS:	530x400x240
TYPE OF LOCK:	Patent lock
TYPE OF DOOR:	Full door, The cabinet door can be opened 180°

PRODUCT DESCRIPTION:

Hydrant cabinet made of sheet metal painted in color white (RAL 9003), external door opening 180°. Universal Model (possibility of connection in left and right version.). Recess Internal Dn 52.

EQUIPMENT:

Recessed hydrant cabinet (W). A 2 baskets with a 2 x flat-folding hoses \varnothing 52 (20 m or 15 m) and a nozzle Pwh \varnothing 52 (connected to the hose). ZH \varnothing 52 hydrant valve.

CONSTRUCTION:

Hydrant cabinet material - Steel sheet or Stainless steel sheet.
Anti-corrosion protection - Phosphating and possibly a zinc primer. Paint Coating - powder paint.

ID:

Safety mark Internal hydrant PN-EN ISO 7010-2012.
Certificate number, User's manual, Manufacturer's data, Rating plate.

WORKING PRESSURE:

From 0,2 to 0,7Mpa.

MINIMUM FLOW RATE FOR NOZZLE DIAMETER 13MM

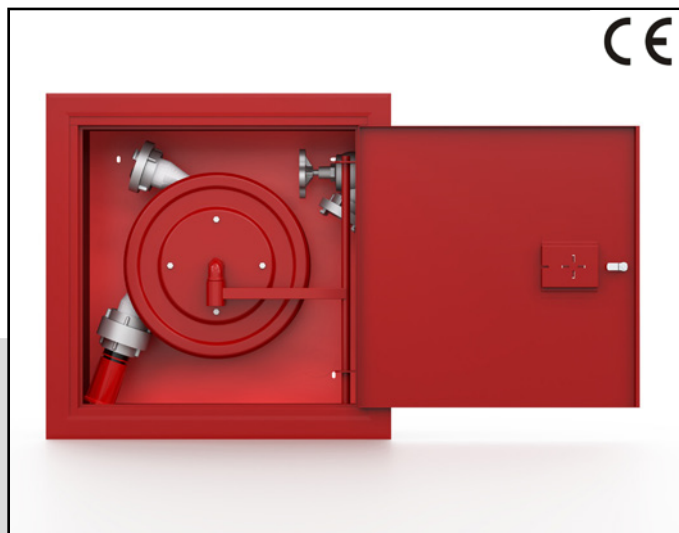
120L/0,2 MPa.

INSTALLATION METHOD:

Universal Model, possibility of connection in left and right version.

COMPLIANCE WITH THE STANDARD: EN-671-2.

Hydrant HWW - 52SZ1 - 560 x 560 x 250 red



TYPE:	HWW-52 - Recess Internal Hydrant
SYMBOL:	HWW – 52SZ1 – standard reel
DIMENSIONS:	560x560x250
TYPE OF LOCK:	Patent lock
TYPE OF DOOR:	Full door, The cabinet door can be opened 180°

PRODUCT DESCRIPTION:

Hydrant cabinet made of sheet metal painted in red (RAL 3000) paint, Universal Model with the possibility of connection, on the left or right side, in the number of 8 holes of the cabinet door. Recess Internal Dn 52.

EQUIPMENT:

Recessed hydrant cabinet (W). A reel with a flat-folding hose \varnothing 52 (20 m or 15 m) and a nozzle Pwh \varnothing 52 (connected to the hose). ZH \varnothing 52 hydrant valve.

CONSTRUCTION:

Hydrant cabinet material - steel sheet or stainless steel sheet.
Anti-corrosion protection - phosphating and possibly a zinc primer. Paint Coating - powder paint.

ID:

Safety mark Internal hydrant PN-EN ISO 7010-2012.
Certificate number, User's manual, Manufacturer's data, Rating plate.

WORKING PRESSURE:

From 0,2 to 0,7Mpa.

MINIMUM FLOW RATE FOR NOZZLE DIAMETER 13MM

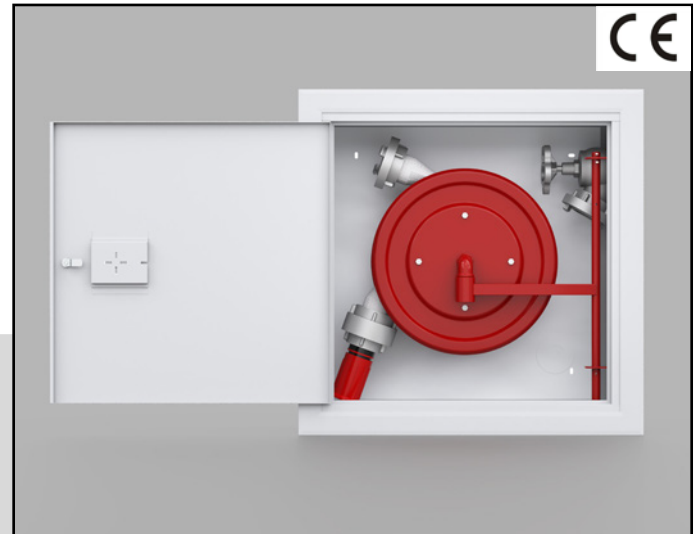
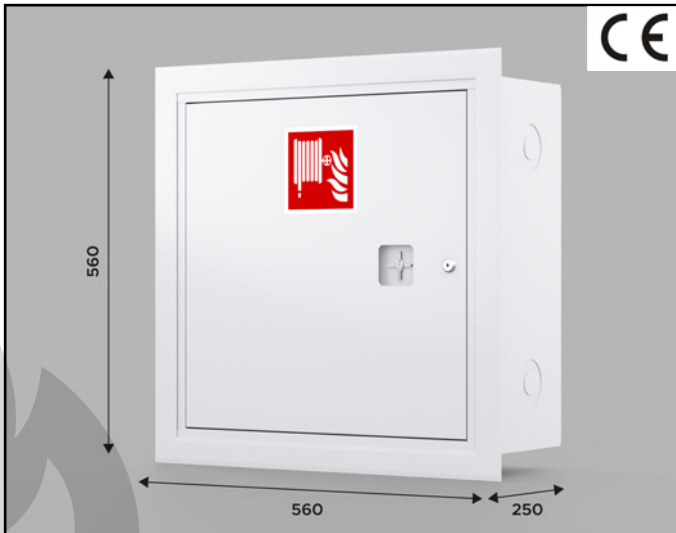
120L/0,2 MPa.

INSTALLATION METHOD:

Universal Model ,possibility of connection in left and right version

COMPLIANCE WITH THE STANDARD: EN-671-2.

Hydrant HWW - 52SZ1 - 560 x 560 x 250 white



TYPE:	HWW-52 - Recess Internal Hydrant
SYMBOL:	HWW – 52SZ1 – standard reel
DIMENSIONS:	560x560x250
TYPE OF LOCK:	Patent lock
TYPE OF DOOR:	Full door, The cabinet door can be opened 180°

PRODUCT DESCRIPTION:

Hydrant cabinet made of sheet metal painted in white (RAL 9003) paint, Universal Model with the possibility of connection, on the left or right side, in the number of 8 holes of the cabinet door. Recess Internal Dn 52.

EQUIPMENT:

Recessed hydrant cabinet (W). A reel with a flat-folding hose \varnothing 52 (20 m or 15 m) and a nozzle Pwh \varnothing 52 (connected to the hose). ZH \varnothing 52 hydrant valve.

CONSTRUCTION:

Hydrant cabinet material - steel sheet or stainless steel sheet.
Anti-corrosion protection - phosphating and possibly a zinc primer. Paint Coating - powder paint.

ID:

Safety mark Internal hydrant PN-EN ISO 7010-2012.
Certificate number, User's manual, Manufacturer's data, Rating plate.

WORKING PRESSURE:

From 0,2 to 0,7Mpa.

MINIMUM FLOW RATE FOR NOZZLE DIAMETER 13MM

120L/0,2 MPa.

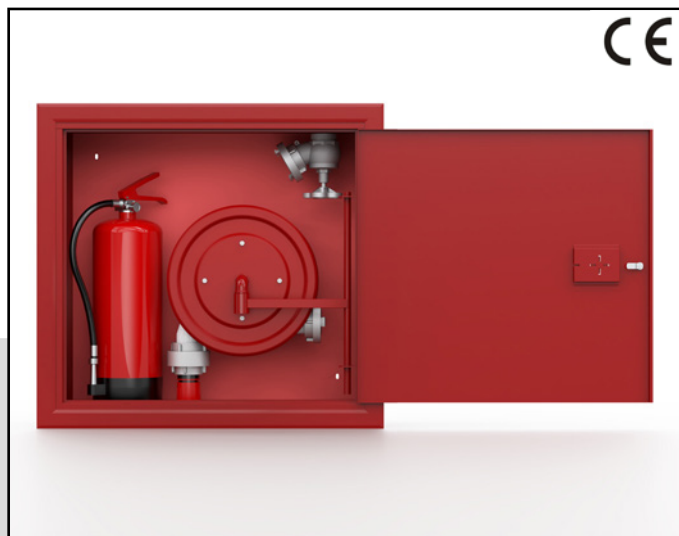
INSTALLATION METHOD:

Universal Model ,possibility of connection in left and right version

COMPLIANCE WITH THE STANDARD: EN-671-2.



Hydrant HWW - 52SZ1 - G - 640 x 700 x 250 red



TYPE:	HWW-52 - Recess Internal Hydrant
SYMBOL:	HWW- 52SZ1-G- Standard reel + Fire extinguisher
DIMENSIONS:	640 x 700 x 250
TYPE OF LOCK:	Patent lock
TYPE OF DOOR:	Full door The cabinet door can be opened 180°

PRODUCT DESCRIPTION:

Hydrant cabinet made of sheet metal painted in color red (RAL 3000), cabinet door opening 180°. Universal Model (possibility of connection in left and right version). Recess Internal Dn 52.

EQUIPMENT:

Recesse hydrant cabinet (W). A reel with a \varnothing 52 flat-fold hose (20 m or 15 m) and a Pwh \varnothing 52 nozzle (connected to the hose). Connector (connection node). GP 6 powder fire extinguisher. ZH \varnothing 52 hydrant valve.

CONSTRUCTION:

Hydrant cabinet material - Steel sheet or Stainless steel sheet.
Anti-corrosion protection - Phosphating and possibly a zinc primer. Paint Coating - powder paint.

ID:

Safety mark Internal hydrant PN-EN ISO 7010-2012.
Certificate number, User's manual, Manufacturer's data, Rating plate.

WORKING PRESSURE:

From 0,2 to 0,7Mpa.

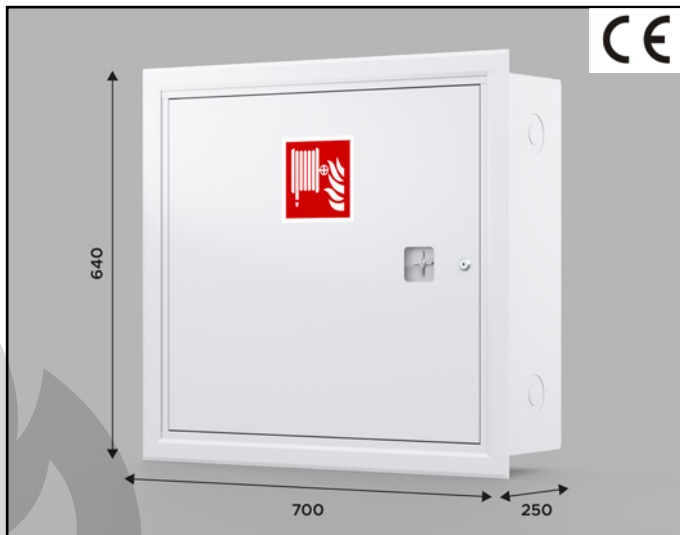
MINIMUM FLOW RATE FOR NOZZLE DIAMETER 13MM

120L/0,2 MPa.

INSTALLATION METHOD:

Universal design with the possibility of connecting to the left or right side

COMPLIANCE WITH THE STANDARD: EN-671-2.



Hydrant HWW - 52SZ1 - G - 640 x 700 x 250 white



TYPE:	HWW-52 - Recess Internal Hydrant
SYMBOL:	HWW- 52SZ1-G- Standard reel + Fire extinguisher
DIMENSIONS:	640 x 700 x 250
TYPE OF LOCK:	Patent lock
TYPE OF DOOR:	Full door The cabinet door can be opened 180°

PRODUCT DESCRIPTION:

Hydrant cabinet made of sheet metal painted in color white (RAL 9003), cabinet door opening 180°. Universal Model (possibility of connection in left and right version). Recess Internal Dn 52.

EQUIPMENT:

Recesse hydrant cabinet (W). A reel with a \varnothing 52 flat-fold hose (20 m or 15 m) and a Pwh \varnothing 52 nozzle (connected to the hose). Connector (connection node). GP 6 powder fire extinguisher. ZH \varnothing 52 hydrant valve.

CONSTRUCTION:

Hydrant cabinet material - Steel sheet or Stainless steel sheet.
Anti-corrosion protection - Phosphating and possibly a zinc primer. Paint Coating - powder paint.

ID:

Safety mark Internal hydrant PN-EN ISO 7010-2012.
Certificate number, User's manual, Manufacturer's data, Rating plate.

WORKING PRESSURE:

From 0,2 to 0,7Mpa.

MINIMUM FLOW RATE FOR NOZZLE DIAMETER 13MM

120L/0,2 MPa.

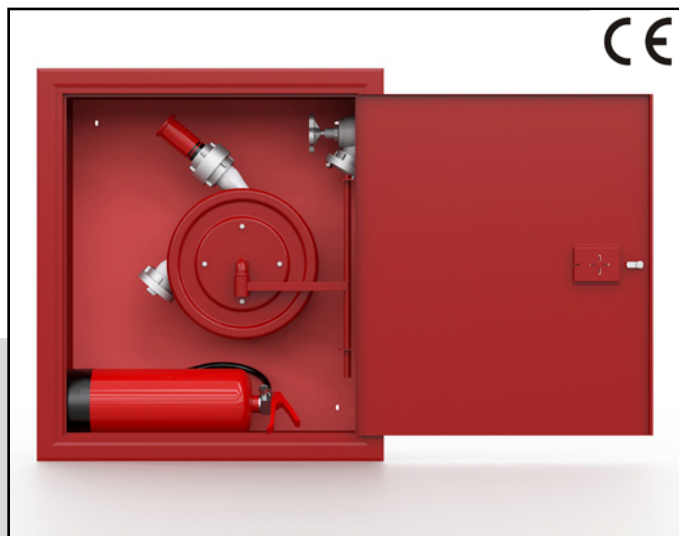
INSTALLATION METHOD:

Universal design with the possibility of connecting to the left or right side

COMPLIANCE WITH THE STANDARD: EN-671-2.



Hydrant HWW - 52SZ1 - G - 810 x 700 x 250 red



TYPE:	HWW-52 - Recess Internal Hydrant
SYMBOL:	HWW- 52SZ1 - G - Standard reel + Fire extinguisher
DIMENSIONS:	810x700x250
TYPE OF LOCK:	Patent lock
TYPE OF DOOR:	Full door The cabinet door can be opened 180°

PRODUCT DESCRIPTION:

Hydrant cabinet made of sheet metal painted in color red (RAL 3000), The cabinet door opening 180°. Universal Model (possibility of connection in left and right version). Recess Internal Dn 52.

EQUIPMENT:

Recess hydrant cabinet (W). A reel with a \varnothing 52 flat-fold hose (20 m or 15 m) and a Pwh \varnothing 52 nozzle (connected to the hose). GP 6 powder fire extinguisher. ZH \varnothing 52 hydrant valve.

CONSTRUCTION:

Hydrant cabinet material - Steel sheet or Stainless steel sheet.
Anti-corrosion protection - Phosphating and possibly a zinc primer. Paint Coating - powder paint.

ID:

Safety mark Internal hydrant PN-EN ISO 7010-2012.
Certificate number, User's manual, Manufacturer's data, Rating plate.

WORKING PRESSURE:

From 0,2 to 0,7Mpa.

MINIMUM FLOW RATE FOR NOZZLE DIAMETER 13MM

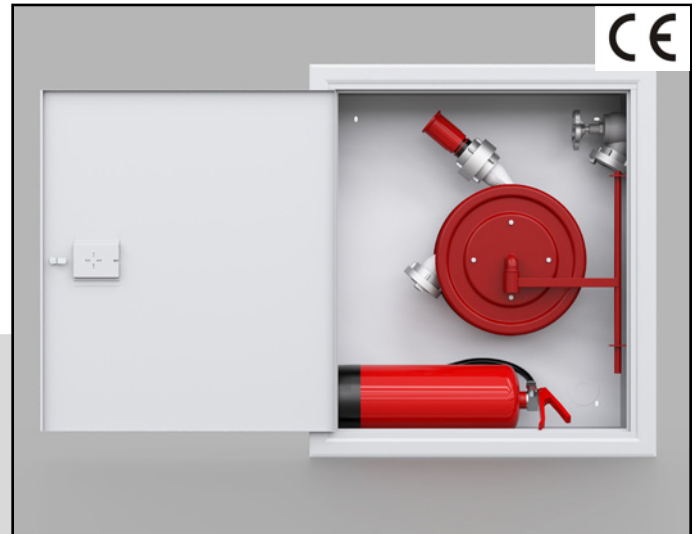
120L/0,2 MPa.

INSTALLATION METHOD:

Universal model with the possibility of connecting to the left or right side of the hydrant valve

COMPLIANCE WITH THE STANDARD: EN-671-2.

Hydrant HWW - 52SZ1 - G - 810 x 700 x 250 white



TYPE:	HWW-52 - Recess Internal Hydrant
SYMBOL:	HWW- 52SZ1 - G - Standard reel + Fire extinguisher
DIMENSIONS:	810x700x250
TYPE OF LOCK:	Patent lock
TYPE OF DOOR:	Full door The cabinet door can be opened 180°

PRODUCT DESCRIPTION:

Hydrant cabinet made of sheet metal painted in color white (RAL 9003), The cabinet door opening 180°. Universal Model (possibility of connection in left and right version). Recess Internal Dn 52.

EQUIPMENT:

Recess hydrant cabinet (W). A reel with a \varnothing 52 flat-fold hose (20 m or 15 m) and a Pwh \varnothing 52 nozzle (connected to the hose). GP 6 powder fire extinguisher. ZH \varnothing 52 hydrant valve.

CONSTRUCTION:

Hydrant cabinet material - Steel sheet or Stainless steel sheet.
Anti-corrosion protection - Phosphating and possibly a zinc primer. Paint Coating - powder paint.

ID:

Safety mark Internal hydrant PN-EN ISO 7010-2012.
Certificate number, User's manual, Manufacturer's data, Rating plate.

WORKING PRESSURE:

From 0,2 to 0,7Mpa.

MINIMUM FLOW RATE FOR NOZZLE DIAMETER 13MM

120L/0,2 MPa.

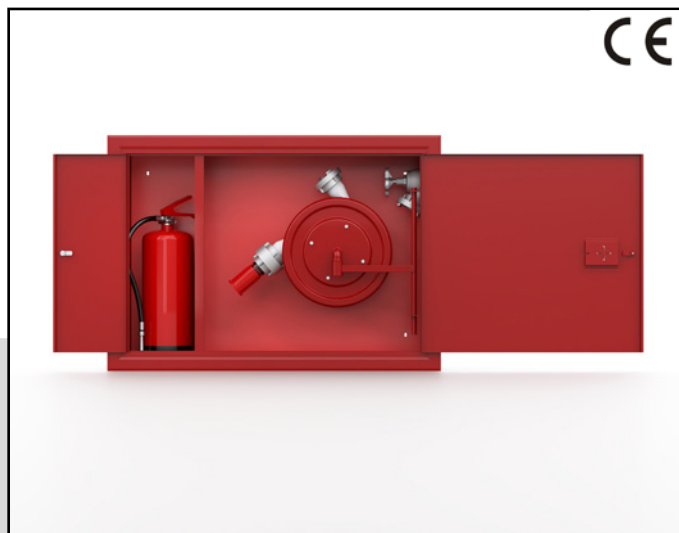
INSTALLATION METHOD:

Universal model with the possibility of connecting to the left or right side of the hydrant valve

COMPLIANCE WITH THE STANDARD: EN-671-2.



Hydrant HWW - 52SZ1- GK- 650 x 940 x 250 red



TYPE:	HWW-52 - Recess Internal Hydrant
SYMBOL:	HWW- 52SZ1 - GK- Standard reel + Fire extinguisher
DIMENSIONS:	650x940x250
TYPE OF LOCK:	Patent lock
TYPE OF DOOR:	Full door + Additional door for fire extinguisher

PRODUCT DESCRIPTION:

Hydrant cabinet made of sheet metal painted in red (RAL 3000) paint. Universal construction with the possibility of connecting to, on the left or right side of the hydrant valve. The cabinet door can be opened by 180° + Additional door for fire extinguishers. Recess Internal Hydrant DN52

EQUIPMENT:

Hydrant cabinet Recessed (W). A reel with a flat-folding hose \varnothing 52 (20 m or 15 m) and a Pwh \varnothing 52 nozzle (connected to the hose). ZH \varnothing 52 hydrant valve + GP6 powder extinguisher.

CONSTRUCTION:

Hydrant cabinet material - steel sheet or stainless steel sheet.
Anti-corrosion protection - Phosphating and possibly a zinc primer. Paint Coating - powder paint..

ID:

Safety mark Internal hydrant PN-EN ISO 7010-2012.
Certificate number, User's manual, Manufacturer's data, Rating plate.

WORKING PRESSURE:

From 0,2 to 0,7Mpa.

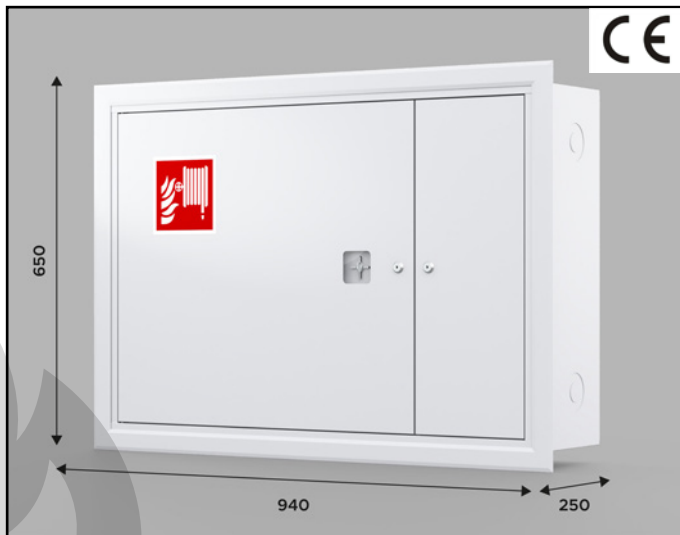
MINIMUM FLOW RATE FOR NOZZLE DIAMETER 13MM

120L/0,2 MPa.

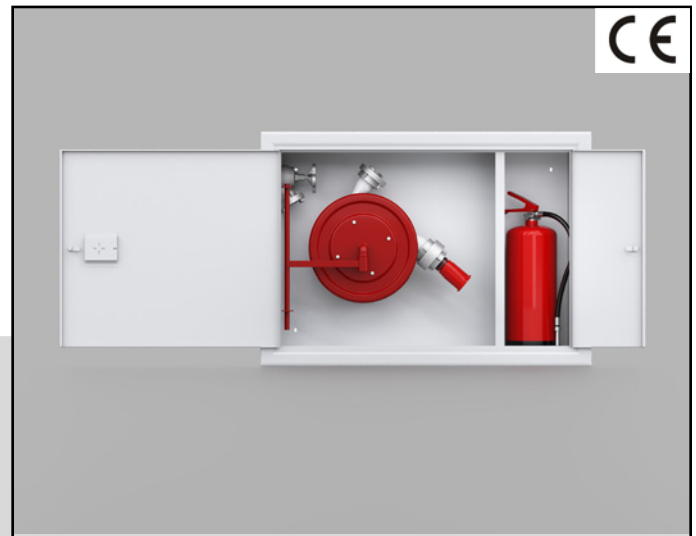
INSTALLATION METHOD:

Universal design with the possibility of connecting to the left or right side

COMPLIANCE WITH THE STANDARD: EN-671-2.



Hydrant HWW - 52SZ1- GK- 650 x 940 x 250 white



TYPE:	HWW-52 - Recess Internal Hydrant
SYMBOL:	HWW- 52SZ1 - GK- Standard reel + Fire extinguisher
DIMENSIONS:	650x940x250
TYPE OF LOCK:	Patent lock
TYPE OF DOOR:	Full door + Additional door for fire extinguisher

PRODUCT DESCRIPTION:

Hydrant cabinet made of sheet metal painted in white (RAL 9003) paint. Universal construction with the possibility of connecting to, on the left or right side of the hydrant valve. The cabinet door can be opened by 180° + Additional door for fire extinguishers. Recess Internal Hydrant DN52

EQUIPMENT:

Hydrant cabinet Recessed (W). A reel with a flat-folding hose \varnothing 52 (20 m or 15 m) and a Pwh \varnothing 52 nozzle (connected to the hose). ZH \varnothing 52 hydrant valve + GP6 powder extinguisher.

CONSTRUCTION:

Hydrant cabinet material - steel sheet or stainless steel sheet.
Anti-corrosion protection - Phosphating and possibly a zinc primer. Paint Coating - powder paint..

ID:

Safety mark Internal hydrant PN-EN ISO 7010-2012.
Certificate number, User's manual, Manufacturer's data, Rating plate.

WORKING PRESSURE:

From 0,2 to 0,7Mpa.

MINIMUM FLOW RATE FOR NOZZLE DIAMETER 13MM

120L/0,2 MPa.

INSTALLATION METHOD:

Universal design with the possibility of connecting to the left or right side

COMPLIANCE WITH THE STANDARD: EN-671-2.



Hydrant HWW - 52SZ1 - 560 x 250 x 560 red



TYPE:	HWW-52 - Recess Internal Hydrant
SYMBOL:	HWWB – 52SZ1 – standard reel
DIMENSIONS:	560x250x560
TYPE OF LOCK:	Patent lock
TYPE OF DOOR:	Side door

PRODUCT DESCRIPTION:

Hydrant cabinet made of sheet metal painted in color red (RAL 3000), with the possibility of connection, from the top side of the cabinet door. Recess .Dn 52.

EQUIPMENT:

Recessed hydrant cabinet (W). A reel with a flat-folding hose \varnothing 52 (20 m or 15 m) and a nozzle Pwh \varnothing 52 (connected to the hose). Connector (connection node). ZH \varnothing 52 hydrant valve.

CONSTRUCTION:

Hydrant cabinet material - steel sheet or stainless steel sheet.
Anti-corrosion protection - phosphating and possibly a zinc primer. Paint Coating - powder paint.

ID:

Safety mark Internal hydrant PN-EN ISO 7010-2012.
Certificate number, User's manual, Manufacturer's data, Rating plate.

WORKING PRESSURE:

From 0,2 to 0,7Mpa.

MINIMUM FLOW RATE FOR NOZZLE DIAMETER 13MM

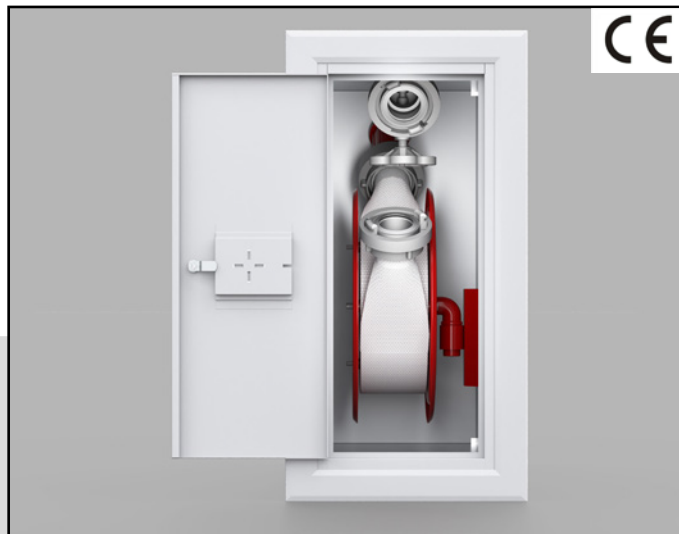
120L/0,2 MPa.

INSTALLATION METHOD:

Construction for connection from the top from the side of the cabinet door.

COMPLIANCE WITH THE STANDARD: EN-671-2.

Hydrant HWW - 52SZ1 - 560 x 250 x 560 white



TYPE:	HWW-52 - Recess Internal Hydrant
SYMBOL:	HWWB – 52SZ1 – standard reel
DIMENSIONS:	560x250x560
TYPE OF LOCK:	Patent lock
TYPE OF DOOR:	Side door

PRODUCT DESCRIPTION:

Hydrant cabinet made of sheet metal painted in color white (RAL 9003), with the possibility of connection, from the top side of the cabinet door. Recess .Dn 52.

EQUIPMENT:

Recessed hydrant cabinet (W). A reel with a flat-folding hose \varnothing 52 (20 m or 15 m) and a nozzle Pwh \varnothing 52 (connected to the hose). Connector (connection node). ZH \varnothing 52 hydrant valve.

CONSTRUCTION:

Hydrant cabinet material - steel sheet or stainless steel sheet.
Anti-corrosion protection - phosphating and possibly a zinc primer. Paint Coating - powder paint.

ID:

Safety mark Internal hydrant PN-EN ISO 7010-2012.
Certificate number, User's manual, Manufacturer's data, Rating plate.

WORKING PRESSURE:

From 0,2 to 0,7Mpa.

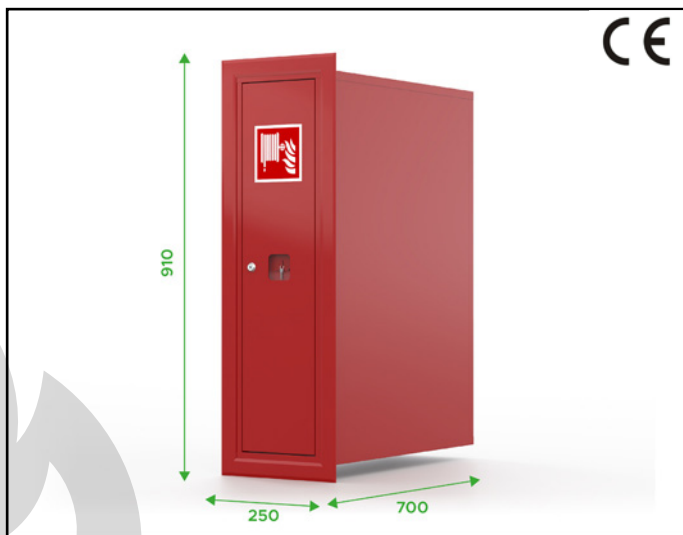
MINIMUM FLOW RATE FOR NOZZLE DIAMETER 13MM

120L/0,2 MPa.

INSTALLATION METHOD:

Construction for connection from the top from the side of the cabinet door.

COMPLIANCE WITH THE STANDARD: EN-671-2.



Hydrant HWW - 52SZ1 - G - 910 x 250 x 700 red



TYPE:	HWWB-52 - Recces Internal Hydrant
SYMBOL:	HWWB - 52SZ1 - G - Standard reel + Fire extinguisher
DIMENSIONS:	910x250x700
TYPE OF LOCK:	Patent lock
TYPE OF DOOR:	Side door

PRODUCT DESCRIPTION:

Hydrant cabinet made of sheet metal painted in color red (RAL 3000). Construction with the possibility of top connection from the side of the cabinet door. Recces Dn 52.

EQUIPMENT:

Recces hydrant cabinet (W). A reel with a \varnothing 52 flat-fold hose (20 m or 15 m) and a Pwh \varnothing 52 nozzle (connected to the hose). GP 6 powder fire extinguisher. ZH \varnothing 52 hydrant valve.

CONSTRUCTION:

Hydrant cabinet material - steel sheet or stainless steel sheet. Anti-corrosion protection - Phosphating and possibly a zinc primer. Paint Coating - Powder paint.

ID:

Safety mark Internal hydrant PN-EN ISO 7010-2012. Certificate number, User's manual, Manufacturer's data, Rating plate.

WORKING PRESSURE:

From 0,2 to 0,7Mpa.

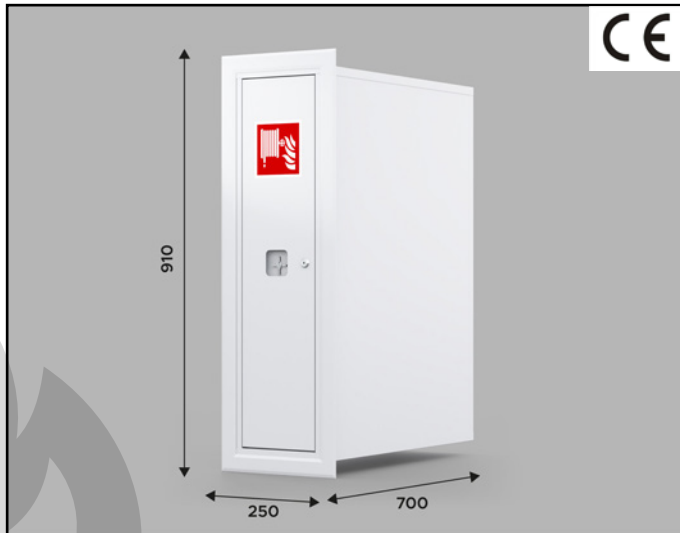
MINIMUM FLOW RATE FOR NOZZLE DIAMETER 13MM

120L/0,2 MPa.

INSTALLATION METHOD:

Construction with the possibility of top connection from the side of the cabinet door.

COMPLIANCE WITH THE STANDARD: EN-671-2.



Hydrant HWW - 52SZ1 - G - 910 x 250 x 700 white



TYPE:	HWWB-52 - Recces Internal Hydrant
SYMBOL:	HWWB - 52SZ1 - G - Standard reel + Fire extinguisher
DIMENSIONS:	910x250x700
TYPE OF LOCK:	Patent lock
TYPE OF DOOR:	Side door

PRODUCT DESCRIPTION:

Hydrant cabinet made of sheet metal painted in color white (RAL 9003). Construction with the possibility of top connection from the side of the cabinet door. Recces Dn 52.

EQUIPMENT:

Recces hydrant cabinet (W). A reel with a \varnothing 52 flat-fold hose (20 m or 15 m) and a Pwh \varnothing 52 nozzle (connected to the hose). GP 6 powder fire extinguisher. ZH \varnothing 52 hydrant valve.

CONSTRUCTION:

Hydrant cabinet material - steel sheet or stainless steel sheet. Anti-corrosion protection - Phosphating and possibly a zinc primer. Paint Coating - Powder paint.

ID:

Safety mark Internal hydrant PN-EN ISO 7010-2012. Certificate number, User's manual, Manufacturer's data, Rating plate.

WORKING PRESSURE:

From 0,2 to 0,7Mpa.

MINIMUM FLOW RATE FOR NOZZLE DIAMETER 13MM

120L/0,2 MPa.

INSTALLATION METHOD:

Construction with the possibility of top connection from the side of the cabinet door.

COMPLIANCE WITH THE STANDARD: EN-671-2.



Hydrant HWW - 52SK1 - 560 x 250 x 560 red



TYPE:	HWW-52 - Recess Internal Hydrant
SYMBOL:	HWWB – 52SK1 – Standard Basket
DIMENSIONS:	560x250x560
TYPE OF LOCK:	Patent lock
TYPE OF DOOR:	Side door

PRODUCT DESCRIPTION:

Hydrant cabinet made of sheet metal painted in color red (RAL 3000), with the possibility of connection, from the top side of the cabinet door. Recess Internal Hydrant Dn 52.

EQUIPMENT:

Recesse hydrant cabinet (W). A basket with a flat-folding hose \varnothing 52 (20 m or 15 m) and a nozzle Pwh \varnothing 52 (connected to the hose). ZH \varnothing 52 hydrant valve.

CONSTRUCTION:

Hydrant cabinet material - steel sheet or stainless steel sheet.
Anti-corrosion protection - phosphating and possibly a zinc primer. Paint Coating - powder paint.

ID:

Safety mark Internal hydrant PN-EN ISO 7010-2012.
Certificate number, User's manual, Manufacturer's data, Rating plate.

WORKING PRESSURE:

From 0,2 to 0,7Mpa.

MINIMUM FLOW RATE FOR NOZZLE DIAMETER 13MM

120L/0,2 MPa.

INSTALLATION METHOD:

Construction for connection from the top from the side of the cabinet door.

COMPLIANCE WITH THE STANDARD: EN-671-2.

Hydrant HWW - 52SK1 - 560 x 250 x 560 white



TYPE:	HWW-52 - Recess Internal Hydrant
SYMBOL:	HWWB – 52SK1 – Standard Basket
DIMENSIONS:	560x250x560
TYPE OF LOCK:	Patent lock
TYPE OF DOOR:	Side door

PRODUCT DESCRIPTION:

Hydrant cabinet made of sheet metal painted in color white (RAL 9003), with the possibility of connection, from the top side of the cabinet door. Recess Internal Hydrant Dn 52.

EQUIPMENT:

Recesse hydrant cabinet (W). A basket with a flat-folding hose \varnothing 52 (20 m or 15 m) and a nozzle Pwh \varnothing 52 (connected to the hose). ZH \varnothing 52 hydrant valve.

CONSTRUCTION:

Hydrant cabinet material - steel sheet or stainless steel sheet.
Anti-corrosion protection - phosphating and possibly a zinc primer. Paint Coating - powder paint.

ID:

Safety mark Internal hydrant PN-EN ISO 7010-2012.
Certificate number, User's manual, Manufacturer's data, Rating plate.

WORKING PRESSURE:

From 0,2 to 0,7Mpa.

MINIMUM FLOW RATE FOR NOZZLE DIAMETER 13MM

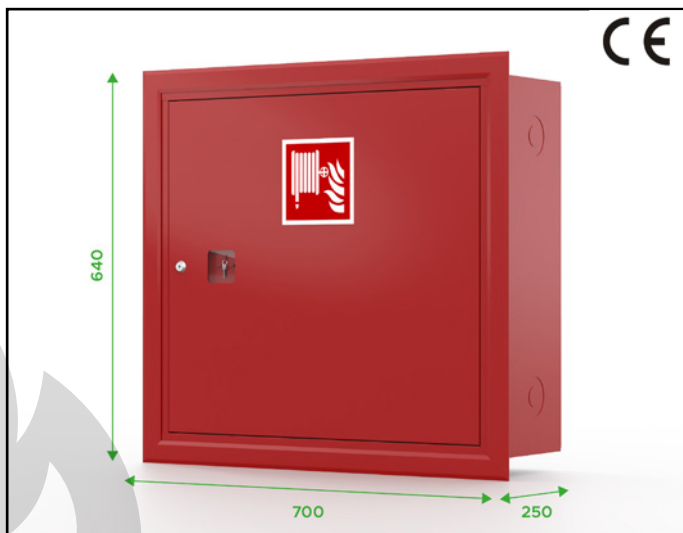
120L/0,2 MPa.

INSTALLATION METHOD:

Construction for connection from the top from the side of the cabinet door.

COMPLIANCE WITH THE STANDARD: EN-671-2.

Hydrant HWW - 52SK1 - G- 640 x 700 x 250 red



TYPE:	HWW-52 - Recess internal hydrant
SYMBOL:	HWW- 52SK1-G- Standard Basket + Fire extinguisher
DIMENSIONS:	640x700x250
TYPE OF LOCK:	Patent lock
TYPE OF DOOR:	Full door The cabinet door can be opened 180°

PRODUCT DESCRIPTION:

Hydrant cabinet made of sheet metal painted in color red (RAL 3000).
Way of connection from above, from the side of the cabinet door. Recess Dn 52.

EQUIPMENT:

Recess hydrant cabinet (W). A basket with a \varnothing 52 flat-fold hose (20 m or 15 m) and a Pwh \varnothing 52 nozzle (connected to the hose). Connector (connection node). GP 6 powder fire extinguisher. ZH \varnothing 52 hydrant valve.

CONSTRUCTION:

Hydrant cabinet material - steel sheet or stainless steel sheet.
Anti-corrosion protection - phosphating and possibly a zinc primer. Paint Coating - powder paint.

ID:

Safety mark Internal hydrant PN-EN ISO 7010-2012.
Certificate number, User's manual, Manufacturer's data, Rating plate.

WORKING PRESSURE:

From 0,2 to 0,7Mpa.

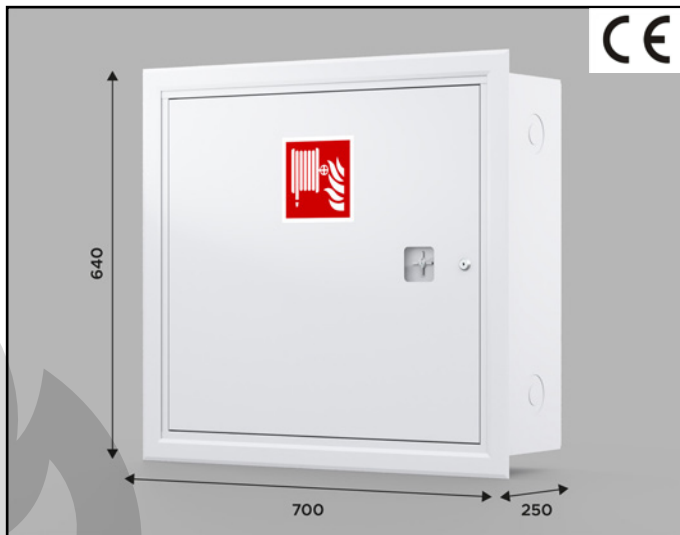
MINIMUM FLOW RATE FOR NOZZLE DIAMETER 13MM

120L/0,2 MPa.

INSTALLATION METHOD:

Universal design with the possibility of connecting to the left or right side of the hydrant valve.

COMPLIANCE WITH THE STANDARD: EN-671-2.



Hydrant HWW - 52SK1 - G- 640 x 700 x 250 white



TYPE:	HWW-52 - Recess internal hydrant
SYMBOL:	HWW- 52SK1-G- Standard Basket + Fire extinguisher
DIMENSIONS:	640x700x250
TYPE OF LOCK:	Patent lock
TYPE OF DOOR:	Full door The cabinet door can be opened 180°

PRODUCT DESCRIPTION:

Hydrant cabinet made of sheet metal painted in color white (RAL 9003).
Way of connection from above, from the side of the cabinet door. Recess Dn 52.

EQUIPMENT:

Recess hydrant cabinet (W). A basket with a \varnothing 52 flat-fold hose (20 m or 15 m) and a Pwh \varnothing 52 nozzle (connected to the hose). Connector (connection node). GP 6 powder fire extinguisher. ZH \varnothing 52 hydrant valve.

CONSTRUCTION:

Hydrant cabinet material - steel sheet or stainless steel sheet.
Anti-corrosion protection - phosphating and possibly a zinc primer. Paint Coating - powder paint.

ID:

Safety mark Internal hydrant PN-EN ISO 7010-2012.
Certificate number, User's manual, Manufacturer's data, Rating plate.

WORKING PRESSURE:

From 0,2 to 0,7Mpa.

MINIMUM FLOW RATE FOR NOZZLE DIAMETER 13MM

120L/0,2 MPa.

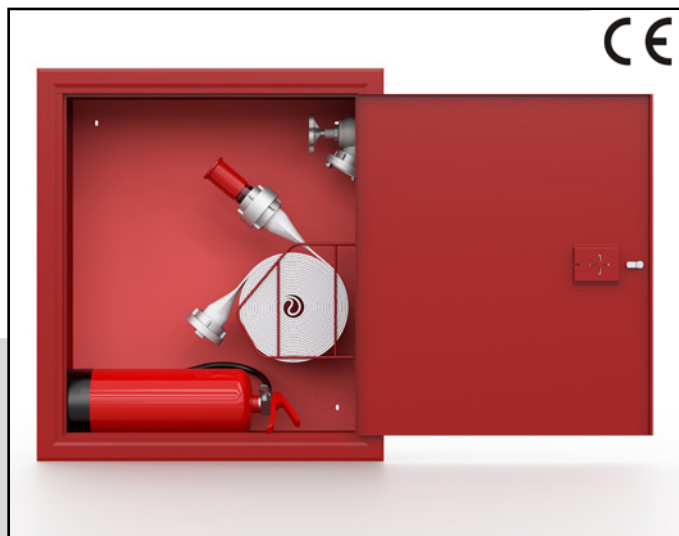
INSTALLATION METHOD:

Universal design with the possibility of connecting to the left or right side of the hydrant valve.

COMPLIANCE WITH THE STANDARD: EN-671-2.



Hydrant HWW - 52SK1 - G - 810 x 700 x 250 red



TYPE:	HWW-52 - Recess internal hydrant
SYMBOL:	HWW- 52SZ1-G- Standard Basket + Fire extinguisher
DIMENSIONS:	810x700x250
TYPE OF LOCK:	Patent lock
TYPE OF DOOR:	Full door The cabinet door can be opened 180°

PRODUCT DESCRIPTION:

Hydrant cabinet made of sheet metal painted in color red (RAL 3000), external door opening 180°. Universal Model (possibility of connection in left and right version). Recess Internal Dn 52.

EQUIPMENT:

Recess hydrant cabinet (W). A basket with a ø 52 flat-fold hose (20 m or 15 m) and a Pwh ø 52 nozzle (connected to the hose). GP 6 powder fire extinguisher. ZH ø 52 hydrant valve.

CONSTRUCTION:

Hydrant cabinet material - steel sheet or stainless steel sheet.
Anti-corrosion protection - phosphating and possibly a zinc primer. Paint Coating - powder paint.

ID:

Safety mark Internal hydrant PN-EN ISO 7010-2012.
Certificate number, User's manual, Manufacturer's data, Rating plate.

WORKING PRESSURE:

From 0,2 to 0,7Mpa.

MINIMUM FLOW RATE FOR NOZZLE DIAMETER 13MM

120L/0,2 MPa.

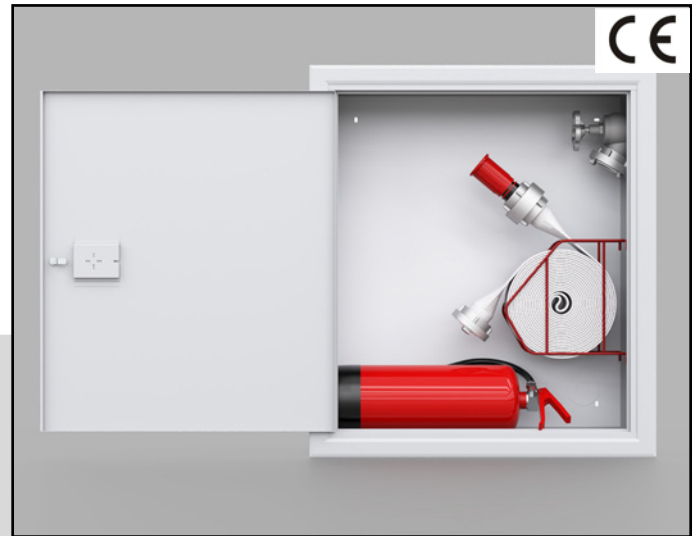
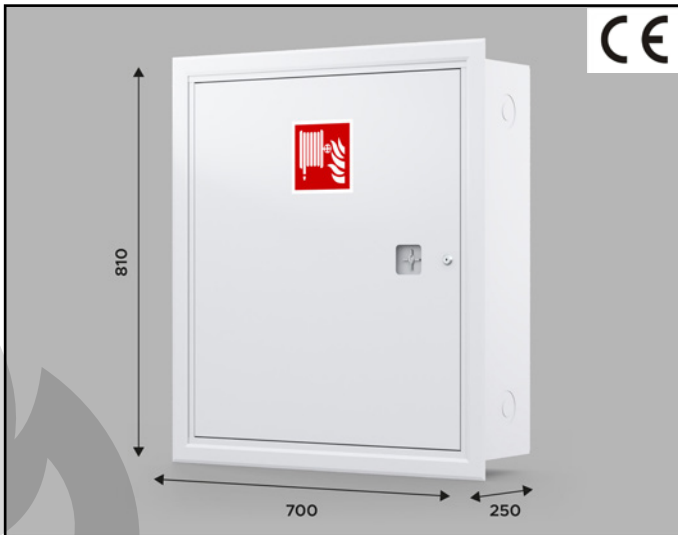
INSTALLATION METHOD:

Universal design with the possibility of connecting to the left or right side.

COMPLIANCE WITH THE STANDARD: EN-671-2.



Hydrant HWW - 52SK1 - G - 810 x 700 x 250 white



TYPE:	HWW-52 - Recess internal hydrant
SYMBOL:	HWW- 52SZ1-G- Standard Basket + Fire extinguisher
DIMENSIONS:	810x700x250
TYPE OF LOCK:	Patent lock
TYPE OF DOOR:	Full door The cabinet door can be opened 180°

PRODUCT DESCRIPTION:

Hydrant cabinet made of sheet metal painted in color white (RAL 9003), external door opening 180°. Universal Model (possibility of connection in left and right version). Recess Internal Dn 52.

EQUIPMENT:

Recess hydrant cabinet (W). A basket with a \varnothing 52 flat-fold hose (20 m or 15 m) and a Pwh \varnothing 52 nozzle (connected to the hose). GP 6 powder fire extinguisher. ZH \varnothing 52 hydrant valve.

CONSTRUCTION:

Hydrant cabinet material - steel sheet or stainless steel sheet.
Anti-corrosion protection - phosphating and possibly a zinc primer. Paint Coating - powder paint.

ID:

Safety mark Internal hydrant PN-EN ISO 7010-2012.
Certificate number, User's manual, Manufacturer's data, Rating plate.

WORKING PRESSURE:

From 0,2 to 0,7Mpa.

MINIMUM FLOW RATE FOR NOZZLE DIAMETER 13MM

120L/0,2 MPa.

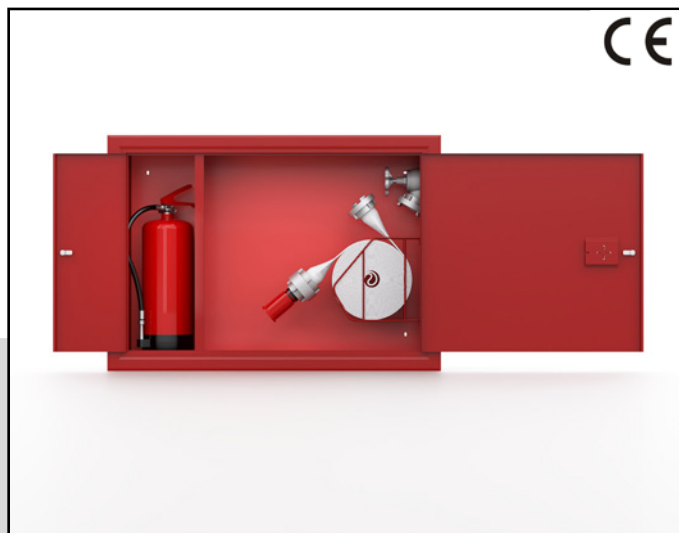
INSTALLATION METHOD:

Universal design with the possibility of connecting to the left or right side.

COMPLIANCE WITH THE STANDARD: EN-671-2.



Hydrant HWW - 52SK1 - GK - 650 x 940 x 250 red



TYPE:	HWW-52 - Recess Internal Hydrant
SYMBOL:	HWW- 52SK1-GK- Standard Basket + Fire extinguisher
DIMENSIONS:	650x940x250
TYPE OF LOCK:	Patent lock
TYPE OF DOOR:	Full door + Additional door for fire extinguisher

PRODUCT DESCRIPTION:

Hydrant cabinet made of sheet metal painted in red (RAL 3000) paint. Universal construction with the possibility of connecting to, on the left or right side of the hydrant valve. The cabinet door can be opened by 180 + Additional door for fire extinguishers. Recess Internal Hydrant DN52.

EQUIPMENT:

Hydrant cabinet Recessed (W). A reel with a flat-folding hose \varnothing 52 (20 m or 15 m) and a Pwh \varnothing 52 nozzle (connected to the hose). Connector (connecting hose). ZH \varnothing 52 hydrant valve + GP6 powder extinguisher.

CONSTRUCTION:

Hydrant cabinet material - steel sheet or stainless steel sheet.
Anti-corrosion protection - phosphating and possibly a zinc primer. Paint Coating - powder paint.

ID:

Safety mark Internal hydrant PN-EN ISO 7010-2012.
Certificate number, User's manual, Manufacturer's data, Rating plate.

WORKING PRESSURE:

From 0,2 to 0,7Mpa.

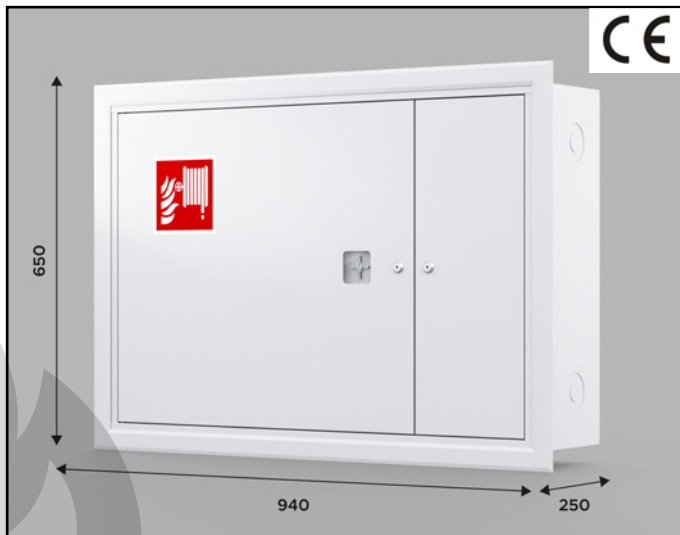
MINIMUM FLOW RATE FOR NOZZLE DIAMETER 13MM

120L/0,2 MPa.

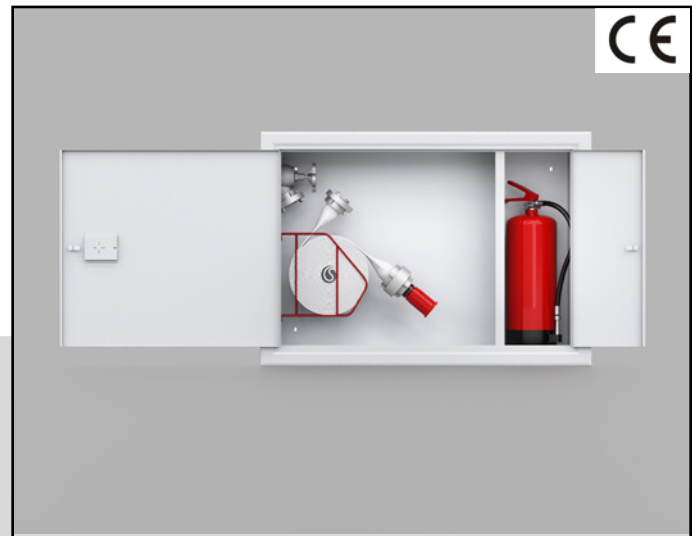
INSTALLATION METHOD:

Universal design with the possibility of connecting to the left or right side of the hydrant valve

COMPLIANCE WITH THE STANDARD: EN-671-2.



Hydrant HWW - 52SK1 - GK - 650 x 940 x 250 white



TYPE:	HWW-52 - Recess Internal Hydrant
SYMBOL:	HWW- 52SK1-GK- Standard Basket + Fire extinguisher
DIMENSIONS:	650x940x250
TYPE OF LOCK:	Patent lock
TYPE OF DOOR:	Full door + Additional door for fire extinguisher

PRODUCT DESCRIPTION:

Hydrant cabinet made of sheet metal painted in white (RAL 9003) paint. Universal construction with the possibility of connecting to, on the left or right side of the hydrant valve. The cabinet door can be opened by 180 + Additional door for fire extinguishers. Recess Internal Hydrant DN52.

EQUIPMENT:

Hydrant cabinet Recessed (W). A reel with a flat-folding hose \varnothing 52 (20 m or 15 m) and a Pwh \varnothing 52 nozzle (connected to the hose). Connector (connecting hose). ZH \varnothing 52 hydrant valve + GP6 powder extinguisher.

CONSTRUCTION:

Hydrant cabinet material - steel sheet or stainless steel sheet.
Anti-corrosion protection - phosphating and possibly a zinc primer. Paint Coating - powder paint.

ID:

Safety mark Internal hydrant PN-EN ISO 7010-2012.
Certificate number, User's manual, Manufacturer's data, Rating plate.

WORKING PRESSURE:

From 0,2 to 0,7Mpa.

MINIMUM FLOW RATE FOR NOZZLE DIAMETER 13MM

120L/0,2 MPa.

INSTALLATION METHOD:

Universal design with the possibility of connecting to the left or right side of the hydrant valve

COMPLIANCE WITH THE STANDARD: EN-671-2.



Hydrant HWW - 52SK1 - G - 910 x 250 x 700 red



TYPE:	HWW-52 - Recess Internal Hydrant
SYMBOL:	HWWB – 52SK1 – G – Standard Basket + Fire extinguisher
DIMENSIONS:	910x250x700
TYPE OF LOCK:	Patent lock
TYPE OF DOOR:	Side doors

PRODUCT DESCRIPTION:

Hydrant cabinet made of sheet metal painted in color red (RAL 3000). Construction with the possibility of top connection from the side of the cabinet door. Recess Dn 52

EQUIPMENT:

Recess hydrant cabinet (W). A basket with a \varnothing 52 flat-fold hose (20 m or 15 m) and a Pwh \varnothing 52 nozzle (connected to the hose). Connector (connection node). GP 6 powder fire extinguisher. ZH \varnothing 52 hydrant valve.

CONSTRUCTION:

Hydrant cabinet material - steel sheet or stainless steel sheet.
Anti-corrosion protection - phosphating and possibly a zinc primer. Paint Coating - powder paint.

ID:

Safety mark Internal hydrant PN-EN ISO 7010-2012.
Certificate number, User's manual, Manufacturer's data, Rating plate.

WORKING PRESSURE:

From 0,2 to 0,7Mpa.

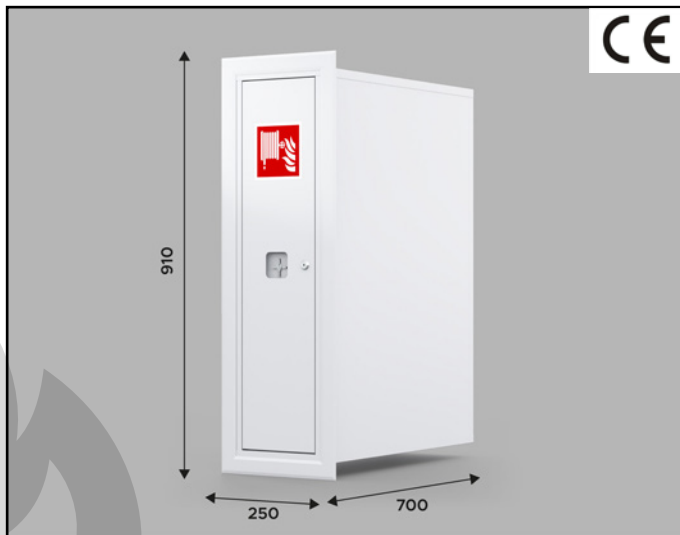
MINIMUM FLOW RATE FOR NOZZLE DIAMETER 13MM

120L/0,2 MPa.

INSTALLATION METHOD:

Construction with the possibility of top connection from the side of the cabinet door.

COMPLIANCE WITH THE STANDARD: EN-671-2.



Hydrant HWW - 52SK1 - G - 910 x 250 x 700 white



TYPE:	HWW-52 - Recess Internal Hydrant
SYMBOL:	HWWB – 52SK1 – G – Standard Basket + Fire extinguisher
DIMENSIONS:	910x250x700
TYPE OF LOCK:	Patent lock
TYPE OF DOOR:	Side doors

PRODUCT DESCRIPTION:

Hydrant cabinet made of sheet metal painted in color white (RAL 9003).
Construction with the possibility of top connection from the side of the cabinet door. Recess Dn 52

EQUIPMENT:

Recess hydrant cabinet (W). A basket with a \varnothing 52 flat-fold hose (20 m or 15 m) and a Pwh \varnothing 52 nozzle (connected to the hose). Connector (connection node). GP 6 powder fire extinguisher. ZH \varnothing 52 hydrant valve.

CONSTRUCTION:

Hydrant cabinet material - steel sheet or stainless steel sheet.
Anti-corrosion protection - phosphating and possibly a zinc primer. Paint Coating - powder paint.

ID:

Safety mark Internal hydrant PN-EN ISO 7010-2012.
Certificate number, User's manual, Manufacturer's data, Rating plate.

WORKING PRESSURE:

From 0,2 to 0,7Mpa.

MINIMUM FLOW RATE FOR NOZZLE DIAMETER 13MM

120L/0,2 MPa.

INSTALLATION METHOD:

Construction with the possibility of top connection from the side of the cabinet door.

COMPLIANCE WITH THE STANDARD: EN-671-2.





Fire Fighting Equipment Company
LESZEK KORUS

44-280 Rydułtowy
ul. Raciborska 279
tel./fax: +48 32 457 88 65
e-mail: biuro@korus.pl

www.korus.pl